

Library & Learning Resource Centres, DRI and Bassetlaw Hospital



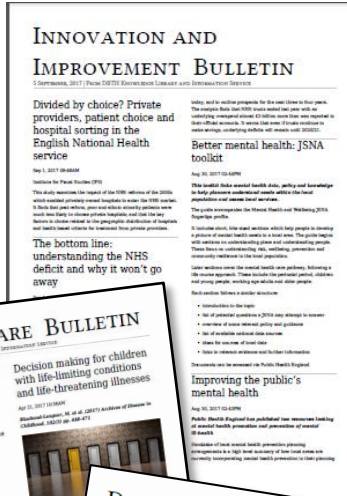
Open to all staff and students,
DRI: Monday-Friday 9.00am – 5.00pm
BAS: Monday-Friday, 8.30am-4.30pm
24/7 access is also available



***We have PCs with printing and scanning facilities for you to use.
Wi-fi and study space is also available.***



Keep up to date with our current awareness bulletins – ask us about subscribing!

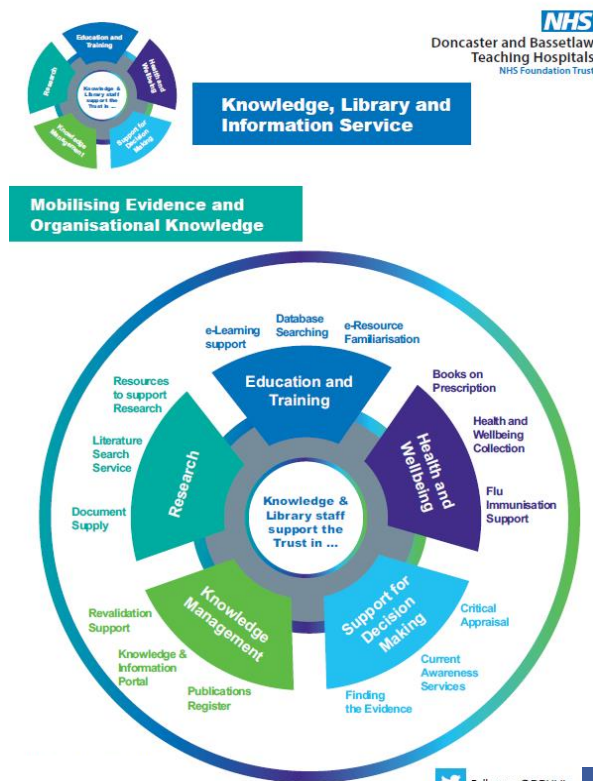


You have access to a collection of books and journals – both in print and electronic formats



Don't forget our enquiry, reference and document supply services as well – ask us for more details

Clinical/Outreach Library Services are available to support you for your innovation & improvement needs, research and audit projects or with your studies



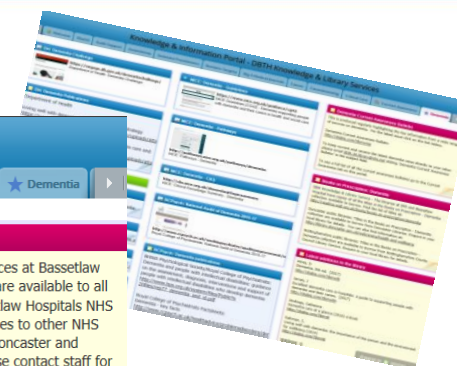
Library staff are available to provide you with support you need – here is a taster of what we offer:

- *Literature search service*
- *Finding the evidence training*
- *Critical appraisal skills training*
- *Document supply*
- *Resources to support research*
- *Tailor-made Portal page for research information*
- *Journal Club Support*

Contact us if you would like some assistance or you would like us to visit your department



www.netvibes.com/dbhlibrary



Knowledge & Information Portal - DBTH Knowledge & Library Services

Welcome to the KLIS knowledge & information portal

Welcome to the KLIS Knowledge & Information Portal, a service from Doncaster & Bassetlaw Knowledge, Library & Information Services to help you keep up to date with new knowledge on relevant healthcare subject areas and specialisms.

Each page contains the latest news, via RSS, blogs and web sites, from relevant journals, specialist and subject specific collections and other sources.

If you would like to make any comment or suggestions for future content please contact:

Janet Sampson
Knowledge, Library & Information Services Manager
janet.sampson1@nhs.net

About us

Doncaster & Bassetlaw Knowledge, Library & Information Services comprises of the Library & Learning Resource Centre at Doncaster Royal Infirmary and the Library & Learning Resource Centre at Bassetlaw Hospital. Together we exist to aid the process of education, training and continuing professional development. Services also help to facilitate access to the evidence base to support the process of clinical governance.

For further information contact:
Library & Learning Resource Centre, Bassetlaw Hospital - dbth.bas.library@nhs.net
or
Library & Learning Resource Centre, Doncaster Royal Infirmary - dbth.dri.library@nhs.net
or
visit the intranet (DBHFT staff only) at:
http://intranet/education_and_development/Library/knowledge
or

Notice: Internet Explorer viewing problems

There are currently problems viewing this Netvibes site in older versions of Internet Explorer. We recommend that you either upgrade your version of Internet Explorer (if viewing on your own device) or view the site in another browser, e.g. Google Chrome, Firefox or Safari.

Trust Publications Register

The Knowledge & Library Service maintains a Publications Register of published articles, books and chapters written by Trust staff.

You can access the Publications Register by going to <http://dab.nhslibraries.com>

Enter the catalogue and from the main search page follow the Publications Register link in the news section. From here you can access a searchable database of publications - options include searching by author or by Care Group/Corporate Directorate.

The entries are being updated monthly - if you have published something we may have missed please e-mail the details to dbth.publications@nhs.net so that it can be followed up.

In addition, items that are indexed in publications that appear in Medline on PubMed appear in the RSS feed above as they are made available.

Forms and documents of interest

Knowledge, Library & Information Services in Doncaster and Bassetlaw - forms and documents for eligible members:

Library membership form - Staff:
<http://digbig.com/5bmwyb>

Service information

Knowledge, library and information services at Bassetlaw Hospital and Doncaster Royal Infirmary are available to all staff and students at Doncaster & Bassetlaw Hospitals NHS Foundation Trust. We also provide services to other NHS staff and public health staff across the Doncaster and Bassetlaw health community areas. Please contact staff for further information.

You can also view our online induction programme to learn more about what services and support we offer - just follow the link below:

<http://digbig.com/5bmwye>

Library Catalogue

Further information about all books and journals in stock at the Doncaster & Bassetlaw Knowledge, Library & Information Services can be found at:

<http://dab.nhslibraries.com>

The catalogue covers both print and electronic books, print journal holdings and locally subscribed e-journals - make sure that you have your Athens username and password handy.

Training Opportunities

Please contact KLIS for training and advice on information retrieval to support evidence-based practice

Sessions are open to all staff at Doncaster & Bassetlaw Hospitals NHS Foundation Trust, NHS Doncaster and Doncaster Healthcare Community staff.

For further information contact
Carol Niles or Dave Ashbey



We are available to give help and guidance, and provide training, on a wide range of e-resources

Anatomy TV
anatomy.tv is the most complete and accessible 3D anatomy resource online. Add your library or institution's subscription and your library or institution's subscription and your library or institution's subscription.

DynaMed Plus
www.dynamed.com

BMJ Best Practice
Your instant second opinion
Search Show conditions
Search BMJ Best Practice

The ROYAL MARSDEN
NHS Foundation Trust
The Royal Marsden Manual of Clinical Nursing Procedures 10th Edition
Logged in as: Doncaster & Bassetlaw Hospitals NHS Foundation Trust Admin Login | Logout | Help
All Content Search The Royal Marsden Manual Search help
Procedures Chapters Illustrations
Doncaster & Bassetlaw Hospitals NHS Foundation Trust Custom Procedure Guidelines
Manage your own custom policies and procedure guidelines.
Clinical content managers can easily create and manage custom content, alongside content from The Royal Marsden Manual.

NICE National Institute for Health and Care Excellence
Evidence search BNF BNF CKS Journals and databases
NICE Pathways NICE Guidance Standards and Indicators Evidence services Sign in

OXFORD MEDICINE ONLINE
Specialty Career Stage Series
My Content (0) My Searches (0)
DONCASTER AND BASSETLAW HOSPITALS NHS FOUNDATION TRUST
Sign in Sign out
Browse all titles in your subscription
DID YOU KNOW?
OXFORD MEDICINE ONLINE FEATURES
+900 AUTHORITY TITLES
+85,900 IMAGES, DIAGRAMS, AND CHARTS
+1470 VIDEOS
Communication in cancer care
By Dr Carmela L. Ryland
The importance of good communication during cancer care can make a real difference in the patient's and family's experience and can even have an impact on their health and well-being. This is backed not only by anecdotal evidence, but also scientific research, which has focused mostly on the doctor-patient relationship. The result of good doctor-patient communication is clear – patients make more informed decisions, have better quality of life, and have lower incidences of anxiety.
Additionally, patients who understand their prognosis are less likely to use futile care at end of life and good doctor-patient communication has been shown to be linked to less likelihood of malpractice cases.
Yet, why is it that communication during cancer care (read this treasury available chapter) often falls short of desirable?
Many of the pressures that make good communication difficult in cancer care are universal. Doctors, and all health care providers, must deal with time constraints, complicated cases or chronic illness, extensive paperwork, language barriers, cultural differences, social class, role models of communication.
New and recently updated:
The 5th Edition of the Oxford Textbook of Vaccines
Mayo Clinic Scientific Press
The Oxford Textbook of HIV Medicine
Helpful Resources:
• Watch the guided tour
• Download a full title list
• Read the FAQs
• Access previous homepage articles
For Librarians:
• Download MARC records
• Resources for librarians

We Care



Health and Wellbeing Resources and Activities

We have available a range of resources for all staff and students to help with their health and wellbeing:

Health Information Books

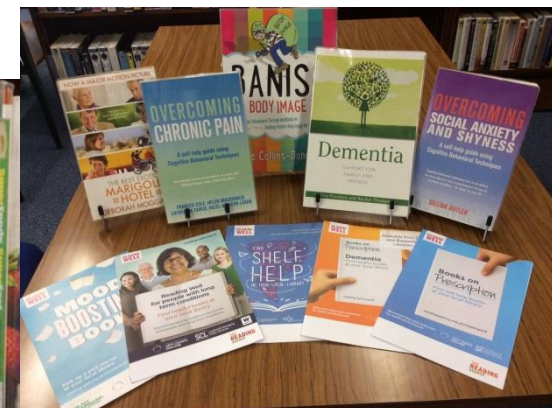
- A range of health information and wellbeing books on a wide range of subjects and conditions

Reading Well Collections

- Self help Books on Prescription Collections on Dementia, Long term Conditions & Mental Health Conditions

Mindfulness activities

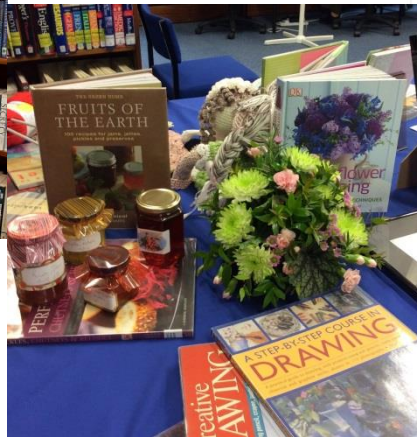
- Want to relax, have some downtime? – why not try a bit of colouring to aid relaxation and de-stress



Further details of what we have available can be found on our Health & Wellbeing page on the intranet - http://intranet/education_and_development/Library/health_and_wellbeing_library_services.aspx

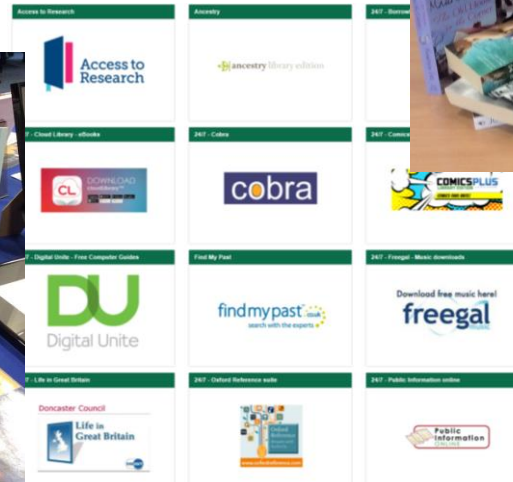
Leisure Library, DRI

- Provides a full range of leisure reading for staff and students courtesy of Doncaster Libraries
- Access to a wide range of e-books and e-resources courtesy of Doncaster Libraries
- PCs and Study Space; somewhere to sit and relax



Book Swap – Bassetlaw

- Want to try out some new novels?
- Drop in to the library and try our Book Swap



How to get in touch or find more information:

Library catalogue: <http://dab.nhslibraries.com>

E-mail: dbth.bas.library@nhs.net

Tel: 572917



E-mail: dbth.dri.library@nhs.net

Tel: 642894



Knowledge & Information Portal: <http://www.netvibes.com/dbhlibrary>

Library website: <https://www.dbth.nhs.uk/services/library-services/>

Follow us on Twitter  and Facebook  @DBHLib

