



foundations for health

Spring 2022



Doncaster and Bassetlaw
Teaching Hospitals
NHS Foundation Trust



New Theatre and Ward Facilities open at Doncaster Royal Infirmary



New Chief People Officer **p2**



New bereavement suite **p9**



Children enjoy toy donation **p15**

Contents

- 4-5** DBTH's Serenity Appeal
- 6-7** New Theatre and Ward Facilities open at Doncaster Royal Infirmary
- 8** Reduction in hospital admissions with ear, nose and throat infections
- 9** New bereavement suite named in honour of Lorraine Butterfield
- 10** Be well, Feel Good' – a free way to achieve better health and wellbeing
- 11** Montagu Hospital's Community Diagnostic Centre
- 12** Special children's book explains hospital visit to young patients
- 13** DBTH receives national CCN award
- 14** Deputy Nursing Director receives 'lifetime contribution' award
- 15-16** Supporting DBTH Charity



Welcoming our new Chief People Officer

Zoe Lintin has been appointed Chief People Officer at Doncaster and Bassetlaw Teaching Hospitals (DBTH) following a rigorous selection process, which included panel interviews made up of executive team members, union representation, governors and clinical teams.

A Fellow of the Chartered Institute of Personnel and Development (CIPD), Zoe is currently the Director of Human Resources (HR) and Organisational Development (OD) at Chesterfield Royal Hospital, a position she has held since March 2017.

Passionate about creating the best possible workplace environment for colleagues, with an acute understanding of the direct impact this has on the delivery of high quality healthcare, Zoe is also the Joint Vice President of the East Midlands branch of the Healthcare People Management Association (HPMA) and the Co-Chair of the East Midlands Social Partnership Forum.

"IN RECENT YEARS AT DBTH WE HAVE MADE GREAT STRIDES TO TRY TO IMPROVE HOW WE SUPPORT OUR COLLEAGUES PLACING THEM, ALONG WITH PATIENTS, AT THE HEART OF EVERY DECISION WE MAKE."

Originally from Bradford, Zoe's early career included working in a range of HR, OD and learning and development roles in the private and legal sector. She has lived in South Yorkshire for more than 16 years, and began her career within the NHS working for Sheffield



Children's NHS Foundation Trust in 2006.

Speaking about the appointment, Zoe said: "I'm really excited to be joining Team DBTH and hopefully making a difference to the nearly 7,000 colleagues who work across the organisations' multiple sites. As we emerge from the pandemic, health professionals face a number of challenges, however there are also great opportunities to make things better for our teams, services, and crucially for our patients.

"I also believe it is important that we create the space required to meet the objectives and ambitions of the NHS People Plan. This means ensuring we value colleagues within the Trust, help them grow in their respective careers by nurturing and developing talent to secure the organisation's long-term future, as well as ensuring that we promote diversity in all its

forms. We have exciting and important work ahead of us, and I can't wait to get started."

Doncaster and Bassetlaw Teaching Hospitals is made up of Doncaster Royal Infirmary, Bassetlaw Hospital and Montagu Hospital in addition to a number of external clinical sites. One of the largest providers within the region, the Trust cares for approximately 500,000 patients each and every year, spanning two counties which include both urban and rural communities.

Richard Parker OBE, Chief Executive at DBTH, said "On behalf of the Trust, I'm delighted to welcome Zoe to Team DBTH. I believe our new Chief People Officer has a wealth of experience working in Human Resources and organisational development in the NHS, and Zoe will bring significant expertise, insight and candour to the role, helping us in our ambition to become the safest trust in England, outstanding in all that we do.

"In recent years at DBTH we have made great strides to try to improve how we support our colleagues placing them, along with patients, at the heart of every decision we make. However we know that the pandemic has had a significant impact on our teams and services and we need to do all we can to support their development, resilience and overall health and wellbeing.

"I believe Zoe will help to support our recovery journey post pandemic, making DBTH both a great place to work and receive care."

The Trust's current Director of People and Organisational Development, Karen Barnard, will depart in mid-February for semi-retirement. Zoe will subsequently take up the post of Chief People Officer, which encompasses and replaces the former role, in early June.

1,000 local residents share their views on urgent and emergency children's care at Bassetlaw Hospital

Health professionals at NHS Bassetlaw Clinical Commissioning Group (CCG) and Doncaster and Bassetlaw Teaching Hospitals (DBTH) are urging residents in Worksop, Retford and surrounding areas.

Health professionals at NHS Bassetlaw Clinical Commissioning Group (CCG) and Doncaster and Bassetlaw Teaching Hospitals (DBTH) are urging residents in Worksop, Retford and surrounding areas to give their views on children's urgent and emergency care at Bassetlaw Hospital as it explores options for the future of inpatient paediatric care on the site.

£17.6 million is being invested to develop a modern centre for urgent and emergency care services at Bassetlaw Hospital, creating an 'Emergency Village'. The new Emergency Village offers an exciting opportunity to locate the Children's Assessment Unit and children's Outpatient Department next to the Emergency Department to make the best use of specialist nursing and medical staff within the hospital. This creates the option of enhancing children's services within the footprint of the expansion. By co-locating services, this development also provides the opportunity to secure a permanent overnight inpatient service for children.

Since mid-December, almost 1,000 people in Bassetlaw have taken up the opportunity to share their views, however, there is still time for residents to get in touch. Views have been received from across the community, and both organisations are encouraging anyone who may use the service, from patients to professionals, partners and the public in general to get involved with the consultation which can be accessed here: <https://www.dbth.nhs.uk/news/say-urgent-emergency-paediatric-care-bassetlaw-hospital/> Dr Eric Kelly Chair at Bassetlaw CCG said: "This impressive investment at Bassetlaw Hospital is extremely positive. It provides us with an opportunity to look at how we deliver urgent and emergency services for the people of Bassetlaw in a way which meets the needs of our community now and for years to come. It also allows us to address the challenges which led to the temporary closure of the overnight children's inpatient service in January 2017 due to safety issues. We understood the strength of feeling from local people when this change was initially introduced. We now want to ensure we consult widely with local people before we make any further changes."

In 2017, and as a result of chronic staffing shortages nationally as well as locally, the CCG and DBTH took the difficult decision to temporarily suspend overnight stays for children receiving care at Bassetlaw Hospital.



Instead, children and young people who required inpatient care were transferred by ambulance largely to Doncaster Royal Infirmary (DRI), some 17 miles away.

Since that time, around 2% of all paediatric attendances have been transferred to DRI on an annual basis – accounting for around 200 patients each year. Less than half of these children stayed longer than 24 hours for their inpatient care.

"WE REMAIN COMMITTED TO ENSURING ALL OUR CHILDREN ARE PROVIDED HIGH QUALITY, SAFE CARE IN AN APPROPRIATE ENVIRONMENT WHERE THEIR NEEDS CAN BEST BE MET, SO PLEASE, USE THIS OPPORTUNITY TO SHARE YOUR VIEWS."

The consultation asks what the local population feels is important in the development of the Emergency Village. Participants are given three options for the future of children's urgent and emergency care at Bassetlaw Hospital. The first option is to continue with the current temporary operating model. The second option is to create a dedicated Children's Assessment Unit (CAU) that closes to overnight admissions. The third option is to create a dedicated CAU but maintain overnight admissions and short-term stays.

David Purdue, Chief Nurse at DBTH said "The response we have received from the public so far has been fantastic and has provided the hospital with invaluable insights to the needs

of local people.

"From previous feedback we have found that patients and their families prefer to receive care closer home. We believe that by co-locating children's services at the front door of the hospital we will be able to enhance our current service by providing short stay assessments any time – day or night. This will mean that for many more patients and their families they will be able to receive urgent care at Bassetlaw Hospital before being safely discharged home, without being transferred to DRI for an overnight stay. This model still requires us to retain our fantastic specialist children's nurses and recruit newly qualified nurses, but we believe this is now a very realistic prospect given the investment in Bassetlaw and co-location enables us to make more efficient use of our dedicated staff.

"We remain committed to ensuring all our children are provided high quality, safe care in an appropriate environment where their needs can best be met, so please, use this opportunity to share your views."

The survey remains open until 28 February 2022. For more information on how you can get involved and links to the online survey and the latest information about the consultation, please head to: <https://www.dbth.nhs.uk/news/say-urgent-emergency-paediatric-care-bassetlaw-hospital/>

Individuals can also:

- Send comments in writing by email to nhsbassetlaw@thecampaigncompany.co.uk
- Send comments by post to FREEPOST RTEK-SATU-YXEC NHS Bassetlaw CCG, Retford Hospital, North Road, Retford, Notts. DN22 7XF (no stamp required).

DBTH's Serenity Appeal to increase le

We have recently announced the launch of our Serenity Appeal to help improve local bereavement and maternity facilities.

Health professionals at the Trust are launching the campaign to support the creation of the 'Serenity Suite' within the Women's and Children's Ward at Doncaster Royal Infirmary (DRI), whilst also funding improvements at Bassetlaw Hospital.

As the namesake of the appeal, the Serenity Suite will be a designated space for families to go if they have experienced a bereavement, allowing them to spend time with, and mourn, the loss of their new-born. It will be a self-contained and sound-proofed environment,

equipped with a kitchen and bathroom, as well as having soft furnishings and lightings, all of which, it is hoped, will help support families during a highly sensitive time.

"THE SERENITY APPEAL WILL SIGNIFICANTLY IMPROVE THE SERVICE THAT WE ARE ABLE TO DELIVER AT THE TRUST."

The appeal hopes to raise £150,000 to fund the project, much of which will be achieved through a variety of smaller fundraising activities and some larger challenges. The funding will not only allow the creation of the suite itself, but also be used to enhance the

support given at all stages of baby loss, right from early pregnancy to infant loss. This will be accomplished through the purchasing of a new scanning machine for Bassetlaw Hospital's Early Pregnancy Assessment Unit (EPAU), as well as by renovating the counselling rooms both at DRI and Bassetlaw.

The EPAU has provided care for approximately 30 people throughout the last two weeks who were diagnosed with early pregnancy loss, and provide urgent care services on both sites for complications associated with early pregnancy. Colleagues within the service want to improve overall patient experience and together will be using the funding given through the Serenity Appeal to replicate their service across both Worksop and Doncaster,



Level of care in maternity bereavement

enabling the Bassetlaw site to offer an in-house scanning service as well. This would significantly improve the service and quality of care offered to those who require it, whilst also having the added benefit of enabling the Bassetlaw ultrasound department to provide extra scanning appointments each day.

Mathew Proctor and Rhian Morris, who are the Trust's Bereavement Midwives, have been working hard to make this project a reality.

Speaking about the appeal, Matt said: "As a Trust we have long provided a good level of physical care but as we know from more complex patient pathway journeys we must also look more holistically at the service we provide. The caring environment makes a huge impact on the mental health of patients, and conversely a negative impact if it isn't appropriate – and we need to ensure that we provide the gold standard for our local communities."

"OUR MIDWIVES DO AN AMAZING JOB SUPPORTING WOMEN AND FAMILIES DURING THEIR TIME OF NEED, AND THE SERENITY SUITE WILL ENSURE THAT THIS LEVEL OF CARE INCREASES, ALONG WITH THE OTHER IMPROVEMENTS WE ARE ABLE TO MAKE."

"The Serenity Appeal will significantly improve the service that we are able to deliver at the Trust. Our midwives do an amazing job supporting women and families during their time of need, and the Serenity Suite will ensure that this level of care increases, along with the other improvements we are able to make. For these women and families, the memories will be everlasting and it's important that we make these as comfortable and precious as possible."

Some fund raising has already gotten underway for the appeal, and the Trust has already received a significant sum from local families, sponsors and organisations to help this dream a reality.

Kevin and Donna Phillips sadly experienced the loss of their child, Luke, last year at the DRI. They believe that the introduction of this suite will make a massive difference to the experience that families go through during this traumatic time.



Kevin said: "We feel that a room which offers just the little things – a kettle and microwave, table, chairs and even a radio would make all the difference. It would give the relatives and friends involved in this tragic experience somewhere to sit and support each other, rather than some having to sit, with the rest standing, feeling uncomfortable."

There are a number of ways to donate to the Serenity Appeal, whether you want to make

a one-off donation, take part in a sponsored event or create your own fundraising project – please head to <https://dbthcharity.co.uk/serenity-appeal/> for more details.

If you have questions or would like to request more information in regards to this appeal, or for any other charitable project at the Trust, please contact the Charity Team on Tel: 01302 644244, email: DBTH.Charity@nhs.net or head to <http://www.dbth.nhs.uk/charity>



Plan

New Theatre and Ward Facilities



A new inpatient ward and theatre block has been officially opened at Doncaster Royal Infirmary following an expedited period of development and construction which began in May 2021.

As part of a £12.4 million investment, the extension has been placed to the rear of the existing Women's and Children's Hospital, and, alongside significant enabling works, contains a modern surgical theatre and related plant room, as well as two inpatient wards which will initially house Paediatric beds and increase the hospital's overall bed capacity by 24. The extensions has been completed using modern methods of construction (MMC) and cutting edge technology by ModuleCo – with similar techniques employed in the construction of facilities such as university student accommodation, the hotel industry, as well as hospitals about to be built as part of the Government's new programme. Working with ModuleCo and Integrated Health Partnerships (IHP), throughout October the Trust took delivery of a number of modules, which make-up the theatre unit and children's ward, with appropriate link corridors created so that they are integrated seamlessly within the existing building.

The area was officially opened in a ribbon cutting ceremony on Friday 10 December, by Richard Parker OBE, Chief Executive at DBTH, and Suzy Brain England, Chair of the Board at DBTH.

Speaking about the expansion, Richard: "I am absolutely delighted that we have been

able to open these new facilities – and share my deepest thanks with those colleagues and partners who managed this project so adeptly and to such a tight schedule. Since the water leak occurred earlier this year, we have had to make space within the hospital for some of our displaced services, such as paediatrics, which, given the activity driven by COVID-19, has made things challenging. With this new block we will be able to transition services back within the footprint of the Women's and Children's Hospital, co-locating expertise once again, ensuring we have the relevant specialities and their staff all in one place.

"I AM ABSOLUTELY DELIGHTED THAT WE HAVE BEEN ABLE TO OPEN THESE NEW FACILITIES."

"Crucially, this area is built to last and will help to increase our overall bed capacity throughout the challenging winter months, and, once our paediatric services are moved back to their original wards once repairs are complete in the main Women's and Children's Hospital block, this extension will be used for other inpatient services, while the theatre accommodation is one of the finest, if not the best, suite within the Trust, and will benefit patients for years to come."

In late April 2021, a significant water leak occurred on the east wing of the building, significantly damaging the electrical infrastructure and, as such, forcing the

relocation of some paediatric and maternity services. Ever since the incident, extensive repair works have been underway within the Women's and Children's Hospital which will be completed in 2022.

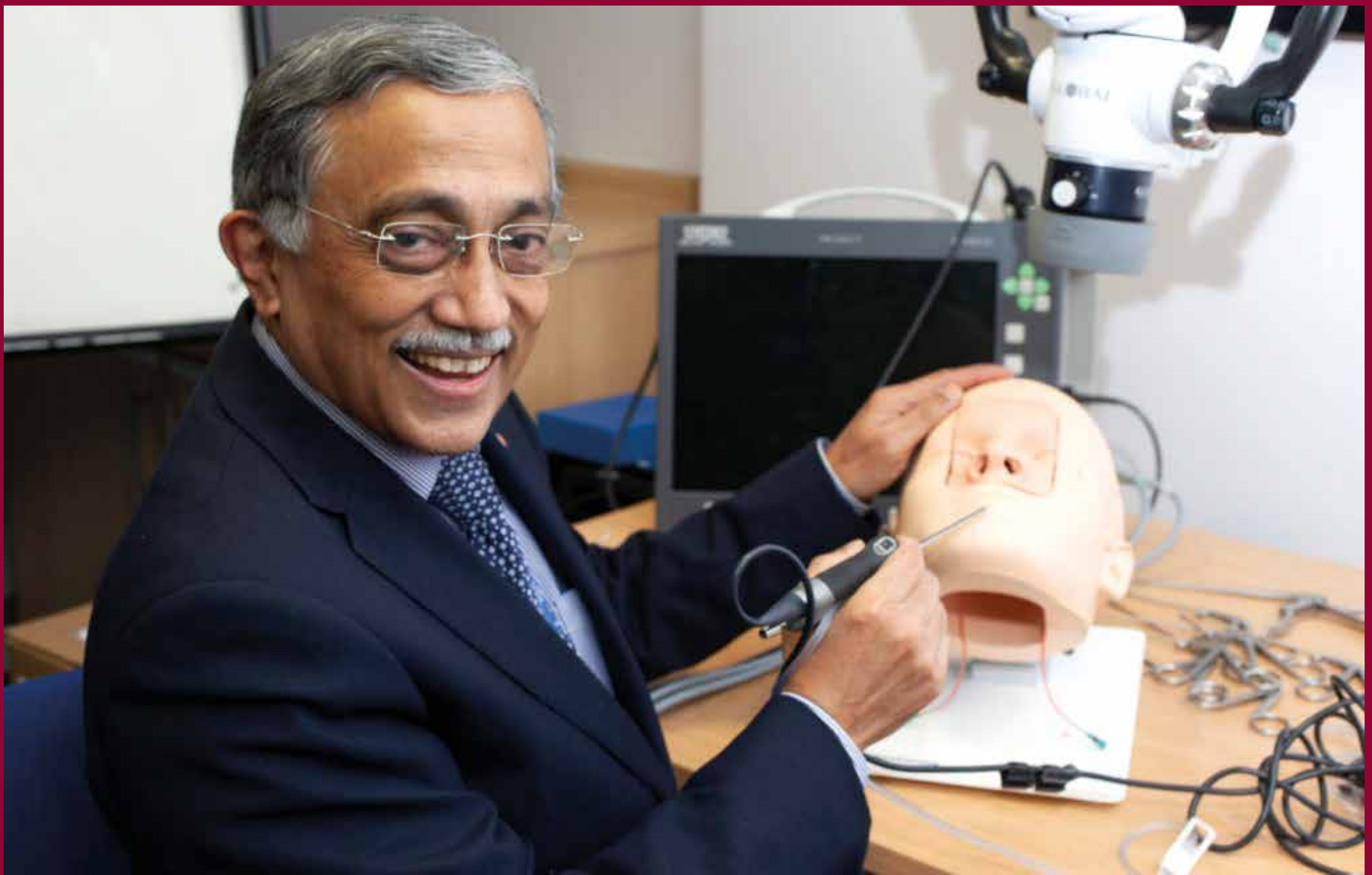
The Women's and Children's Hospital was built as part of a wide-scale expansion of DRI which began in 1962 as it became Britain's first District General Hospital. The aforementioned building was complete in 1967 and has been in operation ever since, and is the venue for an average of 4,000 births every single year.

Dr Kirsty Edmondson Jones, Strategic Director of Estates and Facilities at DBTH, said: "This project has been a huge undertaking and the speed at which it has been achieved, from our initial conversations to seeing this facility constructed and operational, has been nothing short of breath taking. I want to share my thanks with our partners at Module Co, as well as those at Integrated Health Projects and VINCI Construction as well as members of the Estates and Facilities team within the Trust. Working closely with colleagues within my team, everyone involved in this project has pulled out all the stops and their dedication and endless can-do attitude will undoubtedly have a hugely positive effect on our patients this winter, and well into the future – thank you all once again."

The overall cost of this development has been approximately £12.4 million, which includes the cost of the wards and theatres, as well as enabling works and repairs to the east side of the Women's and Children's Hospital.

open at Doncaster Royal Infirmary





Study finds significant reduction in hospital admissions with ear, nose and throat infections due to Covid-19 measures

Related admissions to hospital due to infection have decreased by nearly 57.56% in the past year.

Mr Muhammed Shahed Quraishi OBE, a Consultant Ear, Nose and Throat (ENT) Surgeon at Doncaster and Bassetlaw Teaching Hospitals (DBTH), has co-authored a ground-breaking report which shows that ear, nose, and throat (ENT) hospital admissions due to infections have decreased by nearly 57.56% due to the physical interventions put in place to tackle COVID-19.

The report, entitled 'A multicentre retrospective cohort study on COVID 19 related physical interventions and adult hospital admissions for ENT infections' is the largest study on this topic area issued to date, and as such has been published in the *European Archives of Oto-Rhino-Laryngology (Europe)* – one of the leading journals of ENT in Europe.

The findings are part of a multi-centre study (taking place in Doncaster, Sheffield and Nottingham), performed in conjunction with specialists Natasha Quraishi, Meghna Ray, Rishi Srivastava, and Jaydip Ray. They covered a sample population of about two million people, comparing adult admissions with acute

tonsillitis, peritonsillar abscess, epiglottitis, glandular fever, peri-orbital cellulitis, acute otitis media, acute mastoiditis, retropharyngeal abscess and parapharyngeal abscess in the one-year period after the introduction of COVID-related physical interventions (2020–2021) with a one-year period before this (2019–2020).

Mr Quraishi explains some of the findings of the study: "In this study, there are 1,864 adult admissions in the 12 months before 23 March 2020. However, there were 791 in the 12 months after 23 March, which is a reduction of 1,073.

"Tonsillitis and Peritonsillar abscess constitute nearly 70% of ENT hospital admissions. This study shows that tonsillitis admissions reduced by 64.4% and Peritonsillar abscess reduced by 60.68%, all because of the physical interventions related to COVID."

Tonsillitis is often caused by old and flu viruses which are caught when tiny droplets pass into the air when you talk, sneeze or cough. Peritonsillar abscesses usually happen as a complication of tonsillitis.

The findings of the study also prove the integral part that the physical interventions

of COVID-19, such as wearing masks and more frequent hand washing, have played in managing bed spaces in hospitals. Mr Quraishi continues: "Out of the two million people within our sample size, we are saving 2,146 bed days per year. If apply this across the whole country, with a population of 68 million or so, we save nearly 73,000 bed days per year."

The study itself concludes by suggesting that there is evidence to support the use of physical intervention to prevent the spread of viral respiratory diseases in the future, as a way of freeing up bed spaces in hospitals and also limiting the prominence of ENT related infections within our society.

In addition to this paper, Mr Quraishi has recently had two other pieces of work published. The first of these was published in *Current Opinion in Otolaryngology (USA)* and was entitled 'Otolaryngology education and training in the COVID-19 and post-COVID-19 digital era: a developing world perspective'. The second, called 'The role of sepsis screening, SIRS and qSOFA in head and neck infections: An audit of 104 patients', was published by *Clinical Otolaryngology* (the official Journal of the UK ENT Society).

New bereavement suite named in honour of our colleague, Lorraine Butterfield

A newly created bereavement room at Doncaster Royal Infirmary's (DRI) Emergency Department has been dedicated to the memory of a nurse who sadly passed away as a result of COVID-19 in late 2020.

The newly designed space will be known as the 'Butterfield Suite' and dedicated to the memory of Lorraine Butterfield, an extraordinary Registered Nurse who worked for many years at DRI and who sadly passed away during the pandemic.

The Butterfield Suite will be a place where relatives and friends can stay, away from the busy ward, giving them a space to grieve following the loss of a loved one. It will offer privacy and dignity as well as facilities to wash and freshen up if required.

Abigail Trainer, Director of Nursing at Doncaster and Bassetlaw Teaching Hospitals (DBTH), said: "The Butterfield Suite is a much-needed addition to our hospital. It will provide a peaceful environment, and somewhere where relatives and friends can go to obtain some privacy at a time when they may need it the most. Losing someone is never easy, and we want to make this time as comfortable as possible, with friends and families receiving appropriate support."

Health professionals within the Emergency Department also believe this space will provide a fitting tribute to their colleague Lorraine, who sadly passed in November 2020 following a brief battle with COVID-19.

Abigail continues: "A Registered Nurse of



Lorraine Butterfield (right) with colleague, Sheila

many years' experience, Lorraine was a familiar and much-loved face within our Emergency Department at Doncaster Royal Infirmary, and made such a huge difference to the countless patients she cared for since joining our Trust in 2004.

"While I never had the privilege to work alongside her, colleagues describe her as a warm, kind and joyous person, who always had a smile for everyone she came across, as well as an ever-extended helping hand for those in need. We believe the Butterfield Suite will help us to keep those memories alive, and ensure we never forget our friend and colleague."

The suite has been funded by Doncaster and Bassetlaw Teaching Hospitals Charity, who received a bid from the team in the Emergency Department at the DRI. The hospital charity funds a vast variety of projects across the Trust, to help their colleagues go above and beyond

what is expected so that they can provide the best possible care to those who need it.

DFS also helped in the creation of this room, kindly donating one sofa, an armchair and some artwork to ensure that the area is as comfortable as possible for those who require its services.

Nick Smith, Chief Executive at DFS, said: "We were really inspired by Lorraine's dedication to her patients and the comfort she brought to so many people in her care. We are humbled to play a small part in her legacy. Giving back to the communities in which we live and work is very important to us and we're confident the Butterfield Suite will provide a caring and comforting space for grieving families."

DBTH could not do any of this without the help of their supporters. With the amazing fundraising efforts from patients, families, carers, staff, friends and local community groups, they are able to make a real difference and make projects, like the creation of this room, possible. If you would like to find out more about Doncaster and Bassetlaw Teaching Hospitals Charity or make a donation, please visit www.dbthcharity.co.uk.





Introducing 'Be well, Feel Good' – a free way to achieve better health and wellbeing

'Be Well, Feel Good' is a new service commissioned by Doncaster Metropolitan Borough Council (DMBC) and run by the Nutrition and Dietetic services at Doncaster Royal Infirmary.

Now open for referrals, the service offers a free 12-week programme which is designed to support and empower participants to make their own health choices and achieve their wellbeing goals using a compassionate and person-centred approach.

The hour-long weekly sessions will be delivered by Registered Nutritionists with input from Cognitive Behavioural Therapists.

Participants will also receive support in between sessions from a dedicated app and be supported to make links with other services within the local community.

Topics covered in the programme include: nutrition, increasing daily movement, mind-set, wellbeing and much more. Groups will be running in a range of community venues across Doncaster, with a virtual group also on offer.

To be eligible for this service participants must be:

- Aged 18 years or over (not pregnant)
- Have a BMI $>30\text{kg/m}^2$ or $>27.5\text{kg/m}^2$ for people with type 2 diabetes or from the BAME communities
- Registered with a Doncaster GP or, if registered with a GP elsewhere, be resident in Doncaster Metropolitan Borough

To access the programme participants can self-refer or be referred by a health professional via phone or email.



Contact the team for further information or general inquiries below:

Telephone: 07342 063262

Email: dbth.bewell@nhs.net

Montagu Hospital's Community Diagnostic Centre enters phase one

'Phase One' of a planned development to speed up diagnostic tests for conditions such as cancer has begun at Mexborough's Montagu Hospital as MRI scanning is now available on site.

In October 2021, Montagu Hospital was selected to host one of two 'Community Diagnostic Centres' (CDC) within the region, following a £3 million investment from the South Yorkshire and Bassetlaw Integrated Care System (ICS), of which the site will receive around £230,000 of capital funding in the first phase.

The main goal of this new service is to improve patient experience by creating a one-stop-shop for a variety of tests and consultations. As a three-phase development, it is envisioned that a patient will just have to keep one appointment, during which all relevant diagnostics can be performed, helping them to receive a clear and faster diagnosis, reducing any delays to the onset of required treatment.

As part of the initial phase, which the Trust launched 3 January 2022, a mobile MRI has been placed at Montagu Hospital, with a similar CT facility to follow in February. Between now and the end of March, it is envisaged that around 2,600 patients will be seen in Mexborough.

Dr Tim Noble, Executive Medical Director at Doncaster and Bassetlaw Teaching Hospitals (DBTH), said: "Earlier this year we were absolutely delighted that Montagu Hospital was selected as one of the sites to host a Community Diagnostic Centre within South Yorkshire. This new facility will allow us to offer an enhanced service to



our patients, conducting a range of tests in one place ensuring individuals are diagnosed as quickly and efficiently as possible, and, if required, treatment started swiftly, giving local people the best chance of a positive outcome.

"Colleagues are currently hard at work to ensure we can launch the first phase of this work in January 2022, and we look forward to welcoming our first patients and offering this fantastic new service for the people of Doncaster, Bassetlaw and beyond."

The funding has been secured as part of a national programme to help the NHS further accelerate diagnostic activity and recover services from the impact of the COVID-19 pandemic as quickly as possible. It is a share of a £350m national pot to create 40 new

Community Diagnostic Centres announced by the Government and NHS on Friday 1 October. The new one-stop-shops for checks, scans and tests will provide a combined 2.8 million scans in their first full year of operation.

Professor Des Breen, Medical Director for the South Yorkshire and Bassetlaw Integrated Care System, said: "When people are unwell and experiencing ongoing signs or symptoms, their doctor might request diagnostic tests to confirm or rule out

Specific conditions or diseases. The Community Diagnostic Centres will be centres in convenient locations, often closer to where people live or easier to get to than larger hospital sites, that will provide diagnostic testing.

"The aspiration is that in the long term patients will be able to visit a local facility and have all (or as many as possible of) their tests done in the same place and on the same day. This would prevent patients from having to move backwards and forwards across healthcare sites as much as they currently do, from NHS site to NHS site, from specialist to specialist.

"Overall, this is a huge step forward in improving the patient experience in diagnosis, and we're really excited to get plans underway for these initial sites while also planning more for the region."

The Community Diagnostic Centre will be developed within three phases – while phase one includes the provisions of MRI and CT scanning capacity, the second which will see further investment and will include ultrasound and endoscopy capabilities installed at Montagu Hospital, alongside a bevy of improvements, while for the third phlebotomy and cardiorespiratory services are being explored.

The Trust is looking for local people to get involved with future projects and developments such as the Community Diagnostic Centre, sharing their views and helping to shape healthcare in the area. If you wish to be involved, please email dbth.comms@nhs.net



Children's ward at Doncaster Royal Infirmary receives donation of 100 copies of children's book

The children's ward at Doncaster Royal Infirmary (DRI) has received a generous donation from ModuleCo of 100 children's books, written, designed and printed with hospital staff and patients in mind.

Created by the team at ModuleCo – who recently completed work on our new paediatric unit – the book takes us through the journey of Riley, a young child who breaks her leg and has to visit the hospital.

The book teaches us of all the different staff Riley encounters and the part they play in caring for her, from the dispatcher who takes the 999 call, to the radiologist who does her x-ray, all the way to the pharmacist who prescribes her medicine.

Author Eliot Langfield, who by day leads the marketing for ModuleCo, decided to write the book to wave the flag for colleagues who work in the facilities they design.

Eliot said: "We aren't onsite for very long. Despite this, we have a relationship with the trust and I wanted to do something that is nice for staff and patients."

He went on: "We just wanted to bring a smile to the staff and highlight all the people involved in delivering care."

Plans for the books include giving them to young patients to read and placing them in waiting areas.

The book features illustrations by Nigel Hyde, one of the several ModuleCo team members who helped manage and contribute to the project.



Jonathan Brindley, Sales and Marketing Director at ModuleCo, said: "Everything was produced in-house. It's something we are all proud of."

Another excellent feature of the book is its use of 'OpenDyslexic', a free online typeface designed to be dyslexia-sympathetic and make reading it easier for children and adults alike.

Helen Mee, the senior sister in the Paediatric unit, said: "It will make a real difference

to the patients we care for, giving them a better understanding of what the stages of treatment are."

"It might also inspire our future workforce by giving children a better understanding of all the roles within healthcare," she explained.

We would like to say a huge thank you to ModuleCo for their continued support and also for this generous donation."



DBTH receives national Critical Care Nursing award

Doncaster and Bassetlaw Teaching Hospitals (DBTH) has been granted one of only 16 contracts across the NHS to run a new specialist academic award in Critical Care Nursing, a programme which is accredited by Sheffield Hallam University and administratively hosted by Sheffield Teaching Hospitals (STH).

The Critical Care Nursing Faculty at DBTH, which is led by Registered Nurses, Dr Lee Cutler, Critical Care Nurse Consultant and Lead Nurse Critical Care Services, and Judith Cutler, Clinical Educator, has delivered a Critical Care Academic programme since 2005 across South Yorkshire. This established programme has not only met the criteria required to obtain one of the 16 contracts given out, but it was also copied by other areas around the country as best practice for organisations to receive similar accreditation.

The introduction of this award means that there will be a sustainable and standardised nationally recognised qualification in Critical Care Nursing for the first time in the history of healthcare in the United Kingdom. It will enable the NHS to give more specialist training to more nurses and allied health professionals, which will significantly strengthen the workforce in intensive care units.

Lee takes up the story: "With all the demands placed upon critical care in the midst of the pandemic, Health Education England made the decision to invest extra funding in this area. Instead of having local courses such as those within South Yorkshire or West Yorkshire, the



intention was to create a standardised and national framework to follow, making it a transferable qualification for clinicians who are moving between trusts and providers.

"The introduction of the National Critical Care Nursing Award means that critical care nurses have a very clear pathway to progress. They can go from being a novice nurse through to being an expert nurse in the department within just a few years.

"Once complete, individuals will come out with a qualification that shows that they are competent and possess high academic abilities. If someone comes to us from another critical care unit, we know what level they are at because they have done this national award and vice versa."

The course itself is funded by Health Education England, who were granted £10 million to roll-out this specialist training. The standardised qualification will take 12 months to complete and aims to support over 10,000 nursing staff nationwide to further their careers in critical care.

Nurses at DBTH will be offered the chance to sign-up to this course, which will provide them with a nationally recognised pathway for a career in adult intensive care units, be it as a clinical educator, leading nursing research, or as a shift leader.

Dr Sam Debbage, Deputy Director of Education & Research at Doncaster and Bassetlaw Teaching Hospitals, said: "This is a fantastic achievement for our Trust, and is testament to the great work undertaken by both Lee and Judith Cutler. We are always looking for new and innovative ways to streamline how we train colleagues, ensuring any gained qualifications are transferable between organisations, guaranteeing good standardisation of practice, as well as seamless progression between roles – treating the NHS as a whole, rather than a number of individual organisations."

Doncaster and Bassetlaw Teaching Hospitals hosts three main sites, Bassetlaw Hospital, Doncaster Royal Infirmary and Montagu Hospital. The Trust became a teaching hospital in 2018 and trains around 25% of all medical students in the region, as well 30% of all other healthcare students.

Appointment of first Professional Nurse Advocate to support mental health of staff

We have appointed our very first Professional Nurse Advocate (PNA) Lead Nurses. The Professional Nurse Advocate Training Programme is a clinical development scheme for registered nurses and was introduced in response and recognition of the effects that the pandemic has had on NHS staff.

PNAs offer something known 'restorative clinical supervisions' – the means placing an emphasis on strengthening an individual's ability to cope by providing a safe psychological space for them to discuss how they are feeling, how their profession impacts on this and how it can affect their professionalism. It was created to address challenges within Critical Care, such as supporting nurses who may be at risk of burning out and in turn could have a negative effect on patient safety, quality of care, staff wellbeing, and absence rates.



Jenny Hunt was one of the first 400 individuals in the country to receive training and has subsequently been successfully appointed into a Lead Professional Nurse Advocate at the Trust through a joint appointment with the University of Sheffield.

Jenny has been seconded into the role and will work to develop a network of trained PNA's at DBTH, in conjunction with the University of Sheffield who

deliver the PNA academic programme locally. The PNA role provides a model of supervision which supports a continuous improvement process that builds personal and professional resilience, enhances quality of care, and supports preparedness for appraisal and revalidation.

Currently there are three qualified PNAs, including Jenny, across the Trust and a further 21 who are either in training, or shall be going into training shortly. The vision, in line with the national strategy, is for the Trust to have one PNA to every 60 nurses by the end of this year. By the following year this will hopefully increase to one PNA to every 40 nurses, and by 2025 they hope to have one PNA to every 20 nurses. The programme is driven by Ruth May, the Chief Nurse at NHS England, and is currently only open to Registered Nurses, but will hopefully be extended to other Allied Healthcare Professionals and other NMC registrants in the future.

Deputy Nursing Director receives 'lifetime contribution' award from the Cancer Alliance

The Deputy Director of Nursing for Patient Experience at Doncaster and Bassetlaw Teaching Hospitals has received a 'Lifetime Contribution to Cancer Services' award for her long-standing dedication to regional cancer care.

Stacey Nutt, who qualified as a nurse in 2000 at the Trust, is best-known for her work in the Chatsfield Suite at Doncaster Royal Infirmary, a chemotherapy unit providing services for day-case haematology and solid tumour malignancies, where she worked for many years.

Drawn to haematology at the start of her career, Stacey eventually worked her way up through the ranks, holding positions as a Ward Manager, Chemotherapy Lead Nurse and eventually in 2014 as the Lead Nurse for Cancer, Palliative care and End of Life (EOL).

"I never seemed to consider anything other than becoming a nurse. When this career was discussed with me it just felt natural." Said Stacey.

After a particularly difficult period in which Stacey and her team cared for a young patient who lost her fight to leukaemia, Stacey was asked to read a eulogy by the deceased's family. It was at this point that her calling for nursing was truly tested.

She explained: "It was a pivotal part of my career. I was questioning whether I could continue to be a nurse. It was breaking me such was the profound sadness that you can experience in this line of work.

"When I stood up, I looked up at the gallery, and I resolved to myself at that point that I need to make a real difference to these patients and families – and since then I've never looked back."

Stacey's work in cancer services moved the Chatsfield Suite into the position of being the best in the region. She contributed to the improvement of patient experience surveys and expanded a single haematology nurse service into a team of five.



On top of this, her innovative and proactive spirits led to her team being the first trained in nurse-led bone marrow biopsies and nurse-led chemotherapy assessments.

Losing her mother in 2010 was also an important milestone for Stacey. Her final words have formed the basis on which Stacey conducts all her incredible cancer service work.

Stacey explained: "When mum died, she said to me 'Keep making me proud'.

"I think about that promise every day and use it in everything I do in developing services; I hope I have made my mum proud."

Now in her role as Deputy Director of Nursing for Patient Experience, Stacey wants to continue to honour her mother's wish through making things work better with the patient in mind.

She said: "If I were a stick of rock, I'd have DBTH running through it. I am a local person and I want to empower our communities. Everyone's voices matter to make our organisation truly what it is."

Stacey was presented with her Outstanding Contribution Award earlier this year by the South Yorkshire and Bassetlaw Cancer Alliance.

In memory of George Webb

With deep sadness, we announce the passing of George Webb, former Lead Governor at the Trust.

George was one of the first public governors to be appointed when we became Doncaster and Bassetlaw Teaching Hospitals NHS Foundation Trust, serving 15 years from 2004 to 2019, much of which was in the role as Lead Governor.

A dedicated advocate for local NHS services, as well as a champion of patients, even

following his departure George remained a firm friend of DBTH and kept in touch, and we will sorely miss his insight, candour and passion. Ultimately, he helped us to improve healthcare in Doncaster and Worksop – a wonderful legacy for which we will be endlessly grateful.

To George's friends, family and loved ones we share our sincere condolences and our collective thoughts are with them during this difficult time.



Children enjoy recent toy donation from rugby club

A wonderful donation, recently made by members of the Doncaster Knights Rugby Football Club, has been handed out to children on Doncaster Royal Infirmary's Children's Ward.

The toys were gratefully received in late December after George Roberts, Mark Best, George Edgson and Jack Spittle, who are all on the Doncaster Knights 1st XV Squad, personally delivered them to the hospital.

The team chose to dedicate them to the young people who were to spend the festive season in the hospital, however the toys were delivered as a New Year's gift after being quarantined.

Jack said: "This year a few of the boys came together to try to make this happen. We raised as much money as we could then headed to Frenchgate to buy as many presents as we could possibly carry.

"At Doncaster Knights, we feel we have an obligation to give back whenever possible and, although COVID made it hard this year to carry out some of the community work we would have normally completed, we like to think the new toys put smiles on a few faces in the Children's Ward at Doncaster Royal Infirmary."

From plushies to figurines, colouring kits and diggers, the selection of toys will be gratefully received by those on the children's ward.



Icky Lall (pictured), the Play Leader on the children's ward, said: "We are very grateful for all the support and the donations we receive." She went on: "It has put a smile on their faces and we appreciate all that is done for us."

Donations made to the Trust such as this are excellent moral boosts to our young patients and a wonderful way to reassure

them that they are being thought of at times of celebration.

If you would like to get involved in fundraising for our hospitals, or would like to know more about support and sponsorship please contact the Communications Team on Tel: 01302 644244, email: DBTH.Charity@nhs.net or head to dbthcharity.co.uk/.

Charity football team raises £7,800 for Serenity appeal

Sands United FC Doncaster, a local charity football team, have raised £7,800 for the Serenity Appeal at Doncaster and Bassetlaw Teaching Hospitals (DBTH).

The donation will support the creation of a bereavement room, entitled 'The Serenity Suite', at Doncaster Royal Infirmary (DRI), the purchasing of a new scanning machine for Bassetlaw Hospital's Early Pregnancy Assessment Unit (EPAU), as well as the renovation of counselling rooms both at DRI and Bassetlaw.

Sands United FC have just under 50 members who have all been affected by baby loss, and they wanted to help ensure that their local hospital has the facilities to best support people who may be going through what they, or their close friends, experienced.

John Drury, the founder of Sands United FC Doncaster, commented on why he thought this appeal was so important. He said: "I lost my son in Leeds, and we witnessed first-hand the facilities that they had in place there. We then had our daughter in Doncaster 14 months later and when we were in the hospital having our sessions, we never once



saw anything like a bereavement suite. We always wondered if something like this actually existed at DRI.

"As soon as we found out that there was not, we thought this is massive. If we did not have that in Leeds, I can imagine that our grieving would have got off to a very bad start. This project is going to affect a lot more people than just us in the team, it will affect everyone in the future, so we want to do what we can to support in its creation."

The team managed to raise £7,800 by organising three separate fundraising events.

The first of these, which took place in early September, was called 'The Yorkshire Football

Club Walk', and was a sponsored walk from Harrogate to Doncaster, with the participants visiting a variety of Yorkshire based football grounds on their way. They passed Elland Road in Leeds, The John Smith's Stadium in Huddersfield, both Sheffield football grounds, and others before finishing at the Eco-Power Stadium in Doncaster. Three members of the team, Rob Campbell, Callum Jones-Bowman, and Marc Henson, set out on the 92-mile walk, and they were met by many of the team for the final leg of the journey between Sheffield and Doncaster.

The team also partook in a 24-hour sponsored walk around Lakeside in Doncaster, pushing an empty pushchair which had the names of babies who are no longer with us written upon it. This event, alongside the Yorkshire Football Club Walk and a fundraising night at the team's local pub, raised £7,800 for the appeal.

If you have questions or would like to request more information in regards to this appeal, or for any other charitable project at the Trust, please contact the Charity Team on Tel: 01302 644244, email: DBTH.Charity@nhs.net or head to <http://www.dbth.nhs.uk/charity>



Introducing the North Notts Nectar Trail

Following the success of the North Notts Journeys Book Bench Trail in 2021, a swarm of 30 bee sculptures will be buzzing into North Notts during spring and summer of 2022.

Can you find all our bees, which are collecting pollen across Worksop, Retford, Harworth and Tuxford? Locate them all using our interactive app, and discover more about how amazing bees are, our environment and how you can ‘bee’ more environmentally aware.

Our swarm of dazzling bees – showcasing artwork from a wide range of talented artists, including many from the North Notts area – are made from recycled, reformed plastic, and each will celebrate positive character traits and good environmental behaviours.

Let’s all ‘bee’ curious, get outside, explore North Notts and learn how to ‘bee’ eco-friendly!

At the end of summer 2022, the sculptures will be displayed one last time at an exciting farewell event and auction, where each will be sold to its highest bidder to raise money for the Doncaster and Bassetlaw Teaching Hospitals Charity.

The North Notts Nectar Trail is being created by Making Trails and is being brought to you by North Notts Business Improvement District (BID), in partnership with Bassetlaw District Council and the DBH Charitable Fund.

Artists, both amateur and professional, have

created designs for 30 bee sculptures, which will capture the imagination of thousands of people in North Notts, as part of an outdoor art trail running for over 20 weeks in the spring and summer of 2022.

The project will raise money for the DBTH Charitable Funds, helping it to go above and beyond when it comes to patient care. We are happy to receive submissions from artists in all locations, but priority will be given to artists from North Notts or those with links to the area.

Why Bees?

Bees are perfectly adapted for pollination, helping plants to grow, reproduce and yield food. In fact, one-third of our global food supply is from plants pollinated by bees. Our trail aims to teach its visitors about these vitally important insects in a fun and engaging way, as well as educating them on the wider importance of being environmentally aware.

The sculpture trail will go live at the beginning of April 2022, and will run for 22 weeks. The sculptures and app will attract visitors and local residents to the streets, open spaces and public areas of North Notts.

After the trail has ended, there will be a closing event and a charity auction with each bee sculpture being sold to the highest bidder for it. All the money will go to the Doncaster and Bassetlaw Teaching Hospitals Charity.

Commissioned artists will each be given an honorarium of £500 per commissioned design upon completion of their design(s).

The Sculpture

The bee and flower sculpture stands approximately 1.7 metres tall and 2 metres wide. They are constructed from a reformed, recycled plastic material, primed and ready for our artists to paint!

Keep an eye out for the sculptures arriving across Worksop and Retford and see if you can spot the bees that relate to the themes below!

1. Bee resourceful	16. Bee visionary
2. Bee green	17. Bee loyal
3. Bee prudent	18. Bee compassionate
4. Bee frugal	19. Bee imaginative
5. Bee economical	20. Bee considerate
6. Bee thrifty	21. Bee fun
7. Bee happy	22. Bee fair
8. Bee brave	23. Bee respectful
9. Bee positive	24. Bee responsible
10. Bee friendly	25. Bee forgiving
11. Bee innovative	26. Bee optimistic
12. Bee kind	27. Bee reliable
13. Bee creative	28. Bee ambitious
14. Bee confident	29. Bee focused
15. Bee curious	30. Bee thoughtful

Inspected and rated

Good in all areas



Wyndthorpe Hall and Gardens Care Home

Situated in the quaint and historic town of Dunsville, in generous private grounds sits Wyndthorpe Hall and Gardens Care Home. Comprising of two buildings, one being a grade two listed 18th century mansion which houses a dome ceiling and has been converted sympathetically. The second being a beautiful red brick purpose-built building with an idyllic walled garden. Both providing a high standard of person centred care in a home from home setting for our clients.



- ✓ We offer long term residential, dementia and nursing care.
- ✓ We also provide day care and short term/respite stays to give home carers a well-earned break.
- ✓ All meals are home cooked and freshly prepared by our cooks in our 4-star rated kitchen. Daily menu choices are available, and all special diets are catered for.
- ✓ There is a hair salon on site which is visited regularly by a professional hairdresser.
- ✓ Chiropody, eye testing service and other complementary therapies are also available by arrangement.
- ✓ We have a full time personal activities leader who provides a varied programme of activities for our clients varying from one to one, group activities, regular outings and frequent fundraising events throughout the year.



Wyndthorpe Hall Care Home

**Wyndthorpe Hall and Gardens Care Home,
High Street, Dunsville, Doncaster, DN7 4DB**

☎ 01302 884650 ☎ 01302 888141

✉ wyndthorpehall.office@gmail.com





2 Cavendish Court, South Parade,
Doncaster DN1 2DJ

Arubia Aesthetics, Artisan Yard,
Dyson Place, Sharrowvale S11 8XX

Call Julia on: 07879813151

infobuniquebeauty@gmail.com

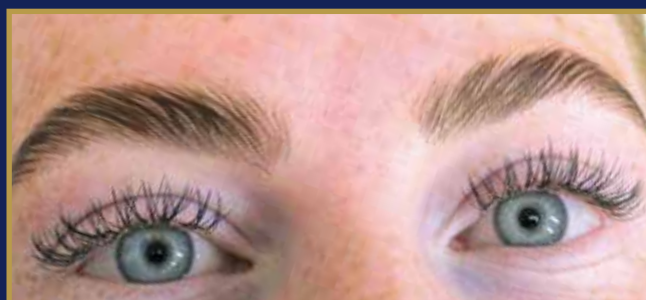
buniquebeauty.book.app



buniquebeauty.co.uk



buniquebeauty_



Semi Permanent Makeup

Semi permanent brows (lasting between 1 and 3 years depending on skin type and aftercare).
Semi permanent lip blush.



Eyelashes Full Set

Classic Lash Extensions
Hybrid (mix)
Russians
LVL Lash Lift

Brow Services

Tint & Wax
Henna Brow
Brow Lamination
Brow Shape

Facial Treatments

Microdermabrasion
Icon Ultralift
Chemical Peel
Microneedling with dermapen



Treatment prices are subject to availability & the management reserves the right to change prices or refuse treatment at their discretion.
Some treatments require a patch test, this must be carried out at least 24-48 hrs before the treatment & cannot be carried out.



EXCLUSIVE DEALS FOR NHS WORKERS

REFINED LIVING IN TRULY
EXCLUSIVE LOCATIONS



WESTMINSTER DRIVE, DUNSVILLE,
DONCASTER, DN7 4QB
2, 3, 4 & 5 BEDROOM HOMES
01302 511549



LONDON ROAD, RETFORD,
NOTTINGHAMSHIRE, DN22 7JE
4 & 5 BEDROOM HOMES
01777 553390



SHIREOAKS,
NOTTINGHAMSHIRE, S81 8PL
4 & 5 BEDROOM HOMES
01909 521431



WHEATLEY HALL ROAD,
DONCASTER, DN2 4PE
COMING SOON SUMMER 2022
3, 4 & 5 BEDROOM HOMES
01302 511097



HARWORTH,
DN11 8AB
COMING SOON SUMMER 2022
3, 4 & 5 BEDROOM HOMES
01302 511096

£1,000

TOWARDS OPTIONAL
EXTRAS WHEN RESERVING*

SCAN HERE
TO FIND YOUR
DREAM HOME



REGISTER YOUR INTEREST TODAY

HARRONHOMES.CO.UK



*Purchasers need to present their NHS worker card to be eligible for offers. T&Cs may apply.

be green

print on paper sourced
from sustainable forests



**Hop to it
be green!**

Brainstorm are a friendly and experienced graphic design company which specialises in the creation of printed media including magazines, brochures, annual reports and exhibition materials. We provide a comprehensive graphic design service, starting from the initial concept, to the actual delivery. Brainstorm combines innovative design and attention to detail, to offer you a service like no other.

**BRAIN
STORM
GRAPHICS**

info@brainstormgraphics.co.uk

Tel: 01302 714528

Doncaster and Bassetlaw Teaching Hospitals NHS Foundation Trust has not vetted the advertisers in this publication and accepts no liability for work done or goods supplied by any advertiser. Nor does Doncaster and Bassetlaw Teaching Hospitals NHS Foundation Trust endorse any of the products or services.

Every possible care has been taken to ensure that the information given in this publication is accurate. Whilst the publisher would be grateful to learn of any errors, it cannot accept any liability over and above the cost of the advertisement for loss there by caused. Octagon Design & Marketing Ltd has not vetted the advertisers in this publication and accepts no liability for work done or goods supplied by any advertiser. Nor does Octagon Design & Marketing Ltd endorse any of the products or services. No reproduction by any method whatsoever of any part of this publication is permitted without prior written consent of the copyright owners.
Octagon Design & Marketing Ltd ©2022 Tel: 01302 714528

Exclusive deals for NHS workers

In recognition of the vital work performed by the NHS, Harron Homes is offering £1,000 of optional extras to NHS staff members who complete a home purchase at any one of our developments near Retford, Doncaster, Worksop and Bassetlaw.

With £1,000 worth of our optional luxury extras, you can add that personal touch to your new dream home, be it with additional fitted wardrobes in the bedroom, or bespoke worktops, appliances and tiling in the kitchen and the bathrooms. To secure this offer, make sure you have your NHS card to hand and then simply complete on a purchase with Harron by 31st October 2022.

Several of our developments are located within easy commuting distance of a number of the region's hospitals. Set in vibrant, tranquil surroundings, Harron Homes' properties cater to families and couples and first-time buyers. Whatever you need, our dream homes have what you're looking for and then some.

The Grange, near Bassetlaw Hospital, and The Brambles, near Retford Hospital, are two homely communities which offer a variety of modern, spacious properties finished to the highest standards.

Close to the Doncaster Royal Infirmary is Wyndthorpe Chase. Peaceful and pretty, this development includes bespoke designs selected from our portfolio. These light-filled, luxury properties are a perfect balance of modern elegance and traditional comfort.

Coming soon to this region are Simpson Park and Riverdale Park. Simpson Park is close to Retford and Bassetlaw Hospitals and not much further from the Doncaster Royal Infirmary. Along with new homes, it will boast high-quality educational facilities and incorporate green open spaces, with a local public house set to make the community feel that much more like home. For those seeking delightful waterside living, Riverdale Park, located along the river frontage, is an ideal choice, only a short drive from Doncaster Royal Infirmary.

To reserve a home and get your £1,000 of optional extras, be sure to book a visit to one of our sites before 31.08.22 with your NHS card to hand. T&Cs may apply. For more information, please visit www.harronhomes.co.uk or contact Harron Homes on 01246733550.

THIS COULD SAVE YOUR LIFE!



A telecare alarm will enable you to call for help 24 hours a day from anywhere in your home

To have a Telecare Alarm installed, call
Bassetlaw District Council on 0800 590 542

This service is available to all Bassetlaw residents



DESIGN
PRINT
SUPPORT



To advertise in this publication please call the sales team on 01302 714528

📍 Rossington Hall, Great North Road, Doncaster, South Yorkshire DN11 0HR
📞 01302 714528 | 🌐 www.octagon.org.uk | ✉ info@octagon.org.uk

Funeral Services



A valued service from caring professionals

Our funeral homes provide the best facilities including private arrangement rooms and peaceful chapels of rest.

We also provide a funeral dividend to help members during this difficult time of bereavement.

North Street, Gainsborough,
Lincolnshire, DN21 2HS
T: 01427 612 131

Roseleigh House, Beacon Hill
Road, Newark, NG24 1NT
T: 01636 703 808

18 Moorgate, Retford,
Nottinghamshire DN22 6RH
T: 01777 701 601



We have funeral homes throughout the county.
For more details visit www.lincolnshire.coop/funeral



STAND OUT

FROM THE CROWD

DESIGN | PRINT | SUPPORT

It is easy being green



Drive an **affordable electric vehicle** with our **super simple** car benefit scheme



Insurance



Servicing



Replacement
tyres



MOT
maintenance



Breakdown
cover

cpcdrive.com

cpcdrive
in partnership with

Tusker.

Ever thought about Fostering?



We need people in your area to help us look after vulnerable children and young people.

If you consider yourself to be a warm and caring individual with the dedication that it takes to be a Foster Carer, we would love to hear from you.

“Deciding to Foster was a big decision but it is most definitely the most rewarding thing I have ever done. If you are thinking about it, go for it.”

Elizabeth,
Foster Carer

Contact us today for more information

01924 802176

www.thecft.org.uk

or text **FOSTERING + YOUR TOWN** to 80818

Registered Charity no. 208607



“My foster carer
rebuilt me to become a
better version of myself”

Make a difference in 2022, become a foster carer.

You could change the life of a Doncaster child
or teen by fostering.

We offer 24/7 support and exceptional training.

Take the first steps

Chat with our team on **0808 129 2600**
or visit **trustfostering.co.uk**



#foster4doncaster



MAURICARE HOMES

Old Vicarage Care Home



Mauricare only employ people who view caring as a vocation; not merely a job, but something they are born to do. Our ethos is not about the years left in our residents' lives, but the life left in their years.

One of the leading care homes in Worksop, our care team offers residential care for those who need help with daily tasks, and dementia care where we support our residents to maintain their independence and individuality, encouraging social activity and building relationships within the home. We also provide respite care to give family or friends a well-earned break, and intermediate care as an alternative to hospital stay.

What makes the resident experience at The Old Vicarage so special? We believe it's our real sense of 'family' that has kindness, friendliness and respect right at its heart. All areas of the home are fresh and cheerful with a choice of lively or quiet communal spaces where residents can relax with each other or welcome family and friends.

Old Vicarage Care Home, Newcastle Avenue, Worksop, Nottinghamshire S80 1NJ
Tel: 01909 475 521 • oldvicarage@mauricare.com • www.mauricare.com