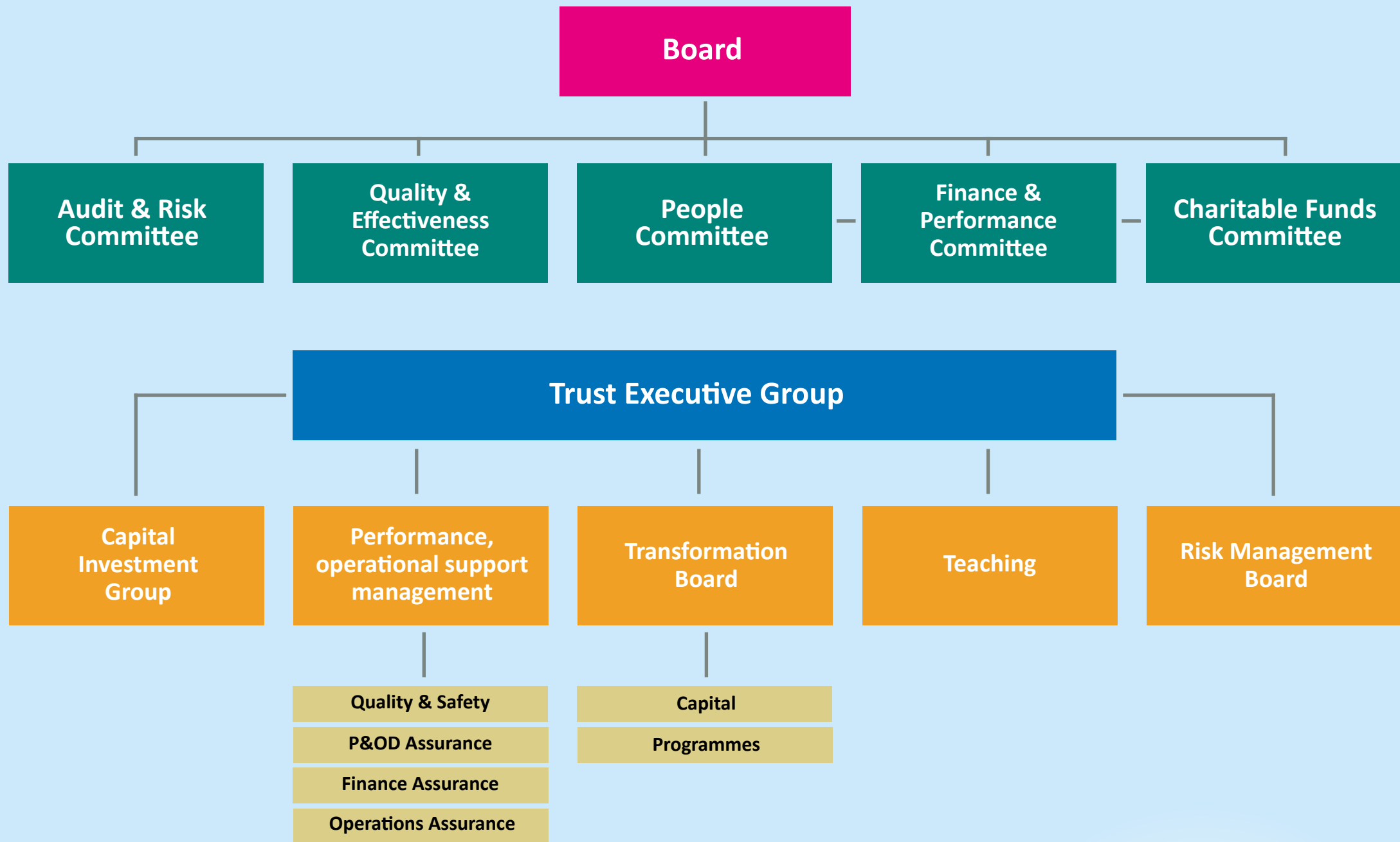




Structure Charts for DBTH

Version: January.v3



Executive Directors



Richard Parker OBE
Chief Executive



Karen Jessop
Chief Nurse



Denise Smith
Chief Operating Officer



Zoe Lintin
Chief People Officer



Jonathan Sargeant
Executive Director of Recovery,
Innovation and Transformation
and Chief Financial Officer



Dr Tim Noble
Executive Medical
Director

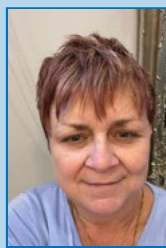


Zara Jones
Deputy Chief Executive

Non-Executive Directors



Suzy Brain England OBE
Chair of the Board



Jo Gander
Non-executive Director (Clinical)



Dr Emyr Jones
Non-executive Director



Kath Smart
Non-executive Director and
Deputy Chair



Mark Bailey
Non-executive Director



Mark Day
Senior Independent Director



Hazel Brand
Non-executive Director



Lucy Nickson
Non-executive Director

Other Directors and colleagues who attend Board



Emma Shaheen
Director of
Communications and
Engagement



Howard Timms
Acting Director of
Operational Estates and
Facilities



Fiona Dunn
Director Corporate Affairs/
Company Secretary



Lois Mellor
Director of Midwifery



Prof. Sam Debbage
Director of
Education and Research



Dr Kirsty Edmondson Jones
Director of Innovation and Infrastructure



Chief Executive



Richard Parker OBE
Chief Executive
rparker7@nhs.net



Zara Jones
Deputy Chief Executive
zara.jones@nhs.net



Emma Shaheen
Director of Communications and Engagement
emma.shaheen@nhs.net



Fiona Dunn
Director Corporate Affairs/
Company Secretary
fiona.dunn2@nhs.net

Chief Nurse



Karen Jessop
Chief Nurse
karen.jessop@nhs.net



Simon Brown
Deputy Chief Nurse
Simon.Brown27@nhs.net



Kirsty Clarke
Associate Chief Nurse- Safe Staffing
kirsty.clarke4@nhs.net



Dr Ken Agwuh
Director of Infection & Control
kenneth.agwuh@nhs.net



Marie Hardacre
Associate Chief Nurse for Patient Safety and Quality
m.hardacre@nhs.net

P&OD and E&R



Zoe Lintin
Chief People Officer
zoelintin@nhs.net



Anthony Jones
Deputy Director of P&OD
anthony.jones3@nhs.net



Prof. Sam Debbage
Director of Education and Research
sam.debbage@nhs.net



Gavin Portier
Head of Leadership & Organisational Development
g.portier@nhs.net



Paula Hill
Freedom to Speak Up Guardian
paula.hill12@nhs.net



Heather Jackson
Director of Allied Health Professionals
heather.jackson@nhs.net



Professor Parveen Ali
Professor of Nursing
parveen.ali@sheffield.ac.uk

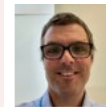
Recovery, Innovation and Transformation, Finance and Infrastructure



Jon Sargeant
Executive Director of Recovery, Innovation and Transformation and Chief Financial Officer
jonathan.sargeant@nhs.net



Dr Kirsty Edmondson Jones
Director of Innovation and Infrastructure
kirsty.edmondson-jones@nhs.net



Dan Howard
Chief Information Officer
dan.howard3@nhs.net



Dr Mike Whiteside
Chief Clinical Information Officer
mike.whiteside@nhs.net



Paul Mapley
Efficiency Director
p.mapley@nhs.net



Alex Crickmar
Deputy Director of Finance
alex.crickmar@nhs.net



Howard Timms
Acting Operational Director of Estates & Facilities
howard.timms@nhs.net



Richard Somerset
Head of Procurement
r.somerset@nhs.net

Medical Director



Dr Nick Mallaband
Acting Executive Medical Director
nicholas.mallaband@nhs.net



Dr Sudipto Ghosh
Associate Medical Director for Professional Standards and Revalidation
sudiptoghosh@nhs.net



Dr Youssef Sorour
Associate Medical Director for Clinical Safety
y.sorour@nhs.net



Dr Joseph John
Medical Director for Operational Stability and Optimisation
joseph.john@nhs.net



Julie Butler
Senior Manager to the Executive Medical Director
julie.butler@nhs.net

Executive Director reports

Chief Operating Officer Division

Chief Operating Officer structure

Deputy Chief Operating Officers



Denise Smith
Chief Operating Officer
denise.smith43@nhs.net

Carolyn Taylor
PA to Executive Director
carolyn.taylor4@nhs.net



Ben Vasey
Deputy Chief Operating Officer
- Elective
benjamin.vasey@nhs.net



Suzanne Stubbs
Deputy Chief Operating Officer
suzanne.stubbs2@nhs.net



Matt Sandford
Interim Associate Chief
Operating Officer
m.sandford@nhs.net

Divisional Directors



Dr Anurag Agrawal
Divisional Director for Medicine and Urgent and
Emergency Care (Interim)
anurag.agrawal1@nhs.net



Dr Jochen Seidel
Divisional Director for Clinical Specialty Services
jochen.seidel@nhs.net



Mr Eki Emovon
Divisional Director for Women and Children
eki.emovon@nhs.net



Mr Ranjit Pande
Divisional Director for Surgery
ranjit.pande1@nhs.net



Dr Eithne Cummins
Divisional Director for Urgent and Emergency Care

Cancer services



Mr Olumuyiwa Olubowale
Cancer Lead for DBTH
olumuyiwaolubowale@nhs.net



Lesley Barnett
Deputy Director of Nursing for
Cancer, Chemotherapy and
End of Life Services
lesley.barnett3@nhs.net



Jackie Simpkin
Lead Cancer Manager
j.simpkin@nhs.net

Patient access

Patient flow and site team



Sam Sidwell
Deputy Director of Nursing for
Operations
samantha.sidwell@nhs.net

Emergency Planning

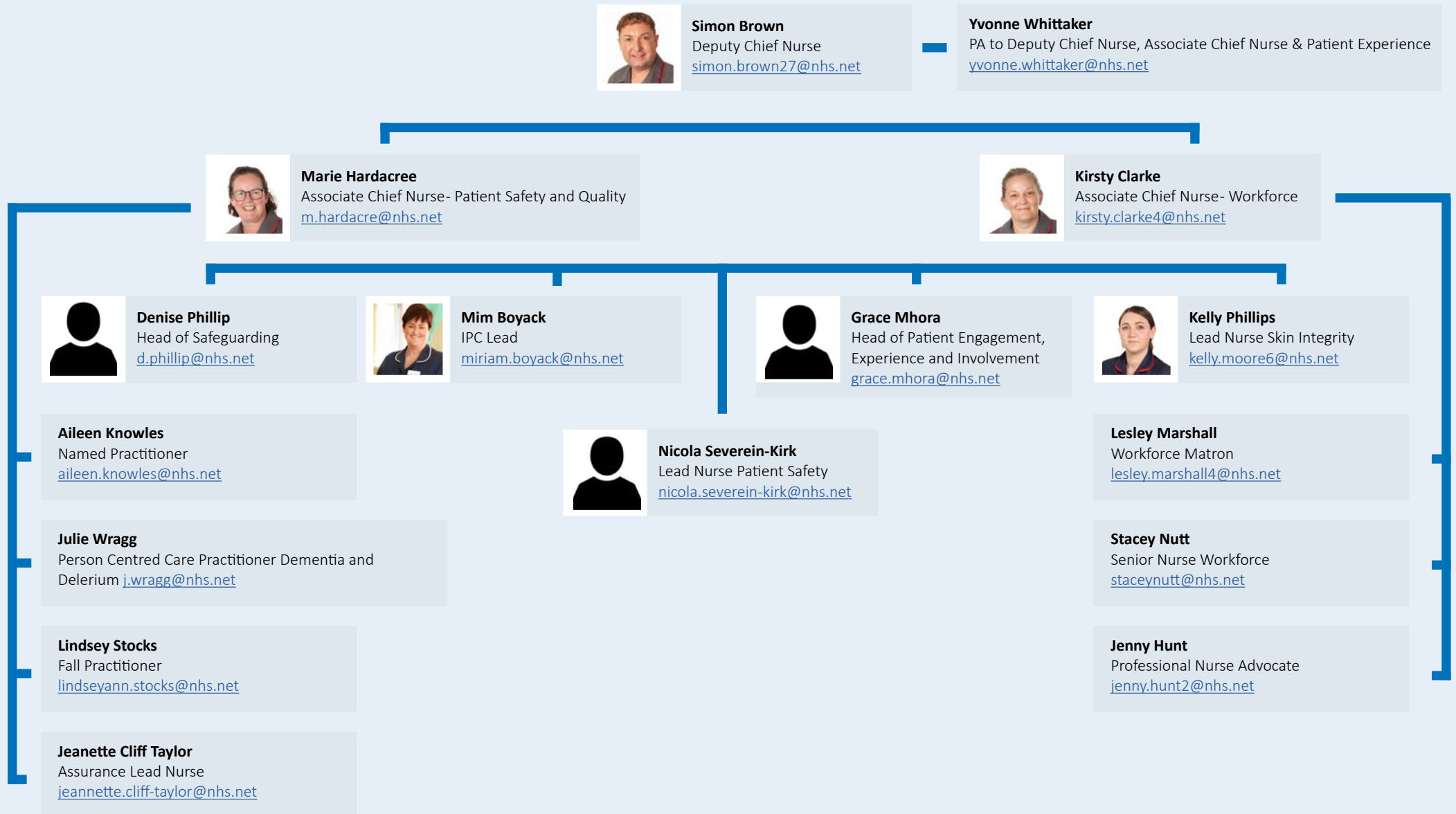


Jeannette Reay
Emergency Planning Officer
jeannette.reay@nhs.net

**Divisional General
Manager**

**Divisional Nurse,
Director of
Midwifery and
Director of AHPs**

Corporate Nursing structure



Medicine structure

Clinical Directors



Dr Rajender Singh
Speciality Medicine CD
rajender.singh1@nhs.net



Dr Shivani Dewan
General Medicine CD
shivani.dewan@nhs.net



Dr Anurag Agrawal
Divisional Director
anurag.agrawal1@nhs.net



Mel Howard
Divisional General Manager
melhoward@nhs.net



Lorna Ball
Divisional Nurse for Medicine
lorna.ball@nhs.net

Michelle Benyon
Business Manager
Michelle.beynon@nhs.net

Rebecca Wright
Business Manager
rebecca.wright19@nhs.net

Michelle Thorpe
Deputy Divisional Nurse
michelle.thorpe1@nhs.net

Howard Briggs
Principal Clinical
Physiologist
howard.briggs@nhs.net

Michelle Cookson
Matron (Bassetlaw Medical
wards)
michelle.cookson3@nhs.net

Zoe Cresswell
Matron (Cardiology, Gastro,
Respiratory)
zoe.cresswell@nhs.net

Tammy Brown
Matron (Renal, Dermatology,
Haematology)
tammy.brown1@nhs.net

Fiona Caddy
Specialist Palliative and End
of Life Care Nurse
fiona.caddy@nhs.net

Mandy Tyrell
Lead ACP
for Virtual ward
mandy.tyrell@nhs.net

Susan Robson
Lead Nurse
for Diabetes
susan.robson7@nhs.net

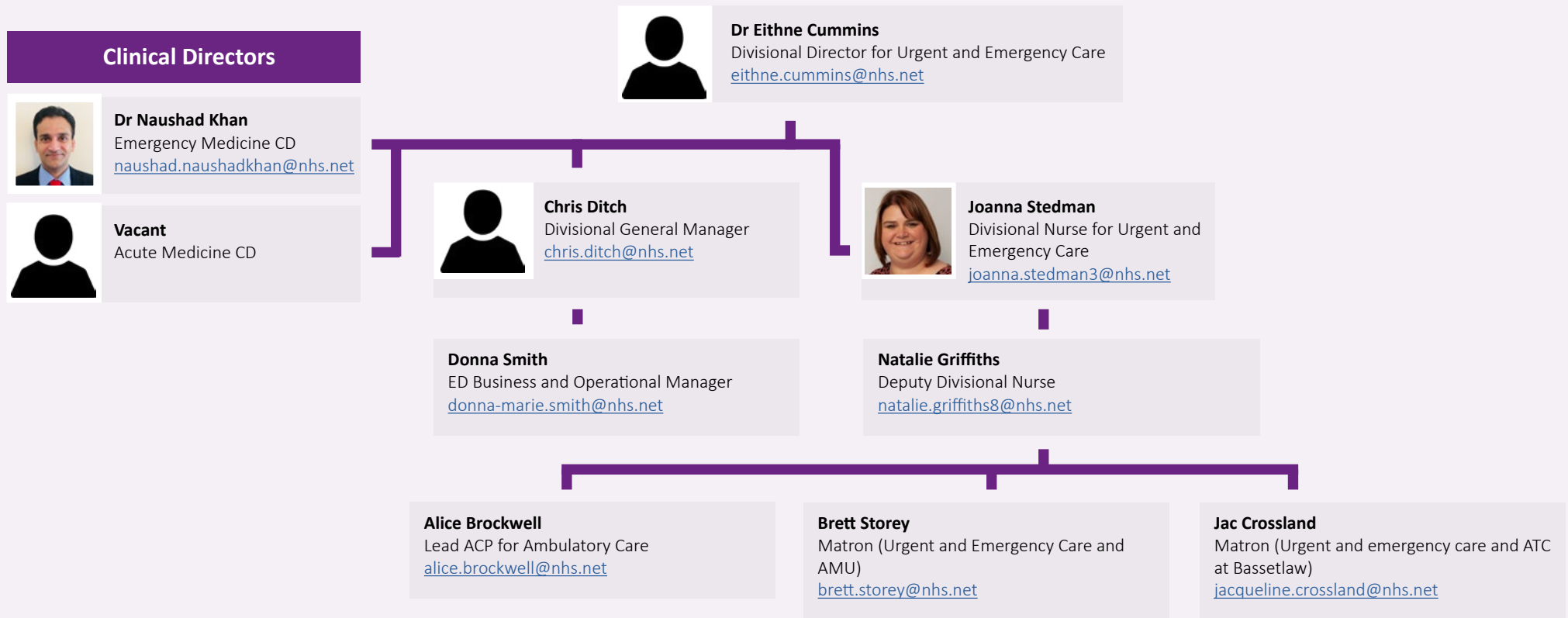
Lynne Rayner
Lead ACP
for Frailty
lynne.rayner1@nhs.net

Deam Dowson
Matron (Care of the Elderly
and Renal)
dean.downson@nhs.net

Joanne Pack
Matron (Outpatient and
Rehab)
joanne.pack1@nhs.net

Urgent and Emergency Care Division

Urgent and Emergency Care structure



Surgery structure

Clinical Directors



Kathryn Rigby

Breast, Vascular, Urology and
Gastrointestinal CD
kathryn.rigby@nhs.net



Mr Omar Hussain

Ear Nose Throat,
Ophthalmology, OMFS,
Dentistry and Audiology CD
omar.hussain2@nhs.net



Kathryn Rigby

Endoscopy and Gastro CD
kathryn.rigby@nhs.net



Mr Ranjit Pande

Divisional Director for Surgery
ranjit.pande1@nhs.net



Lucy Hammond

Divisional General Manager
lucyhammond1@nhs.net



Elizabeth Dunwell

Divisional Nurse for Surgery
elizabethdunwell@nhs.net



Anna Hegarty

Deputy Divisional Nurse
anna.hegarty@nhs.net

Christopher Magson

Business Manager
for Trauma &
Orthopaedics
christopher.magson@nhs.net

Vikki Baxter

Business Manager for
GI and Endoscopy
v.baxter1@nhs.net

Janette Bailey

Business Manager for
Specialist Surgery
janette.bailey1@nhs.net

Kerry Allen

Business Manager for
Head and Neck
kerry.allen3@nhs.net

Margaret Harris

Business Manager
margaret.harris7@nhs.net

Jessica Wright

Deputy Matron (T&O)
jessica.wright29@nhs.net

Helen Humphrey-Shepherd

Matron (Breast)
h.humphrey-shepherd@nhs.net

Theresa Allen

Matron (Urology and
Endoscopy)
theresa.allen1@nhs.net

Rachel Gibson

Lead Nurse
Ambulatory Care
rachel.gibson9@nhs.net

Sarah Chapman

Matron (Surgery and
Assessment)
sarah.chapman17@nhs.net

Rebecca McCombe

Matron (Surgery and
Assessment)
rebecca.mccombe@nhs.net

Karen Hill

Lead Nurse
Orthopaedic Trauma
karen.hill17@nhs.net

Clinical Specialist Services structure

Clinical Directors



Dr Ken Agwuh
Pathology CD
kenneth.agwuh@nhs.net



Dr Padma Gopal
Anaesthetics CD
padma.gopal@nhs.net



Dr Jas Sawhney
Medical Imaging CD
jas.sawhney@nhs.net



Rachel Wilson
Chief Pharmacist
rachel.wilson31@nhs.net



Paul Gravil
Head of Pathology
paul.gravil@nhs.net



Sara Elliott
Head of Medical Imaging
sara.elliott1@nhs.net



Dr Jochen Seidel
Divisional Director
jochen.seidel@nhs.net



Kelly Cullum
Divisional General Manager
kelly.cullum@nhs.net



Emma Galloway
Divisional Nurse for Clinical Specialty Services
emma.galloway@nhs.net

Sarah Taylor
Deputy Divisional Nurse
sarah.taylor173@nhs.net

Simon Lister
Business Manager
simon.lister4@nhs.net

Marie Summerly
Theatres Services Manager
marie.summerly@nhs.net

Dawn Ibbotson
Business Manager
d.ibbotson@nhs.net

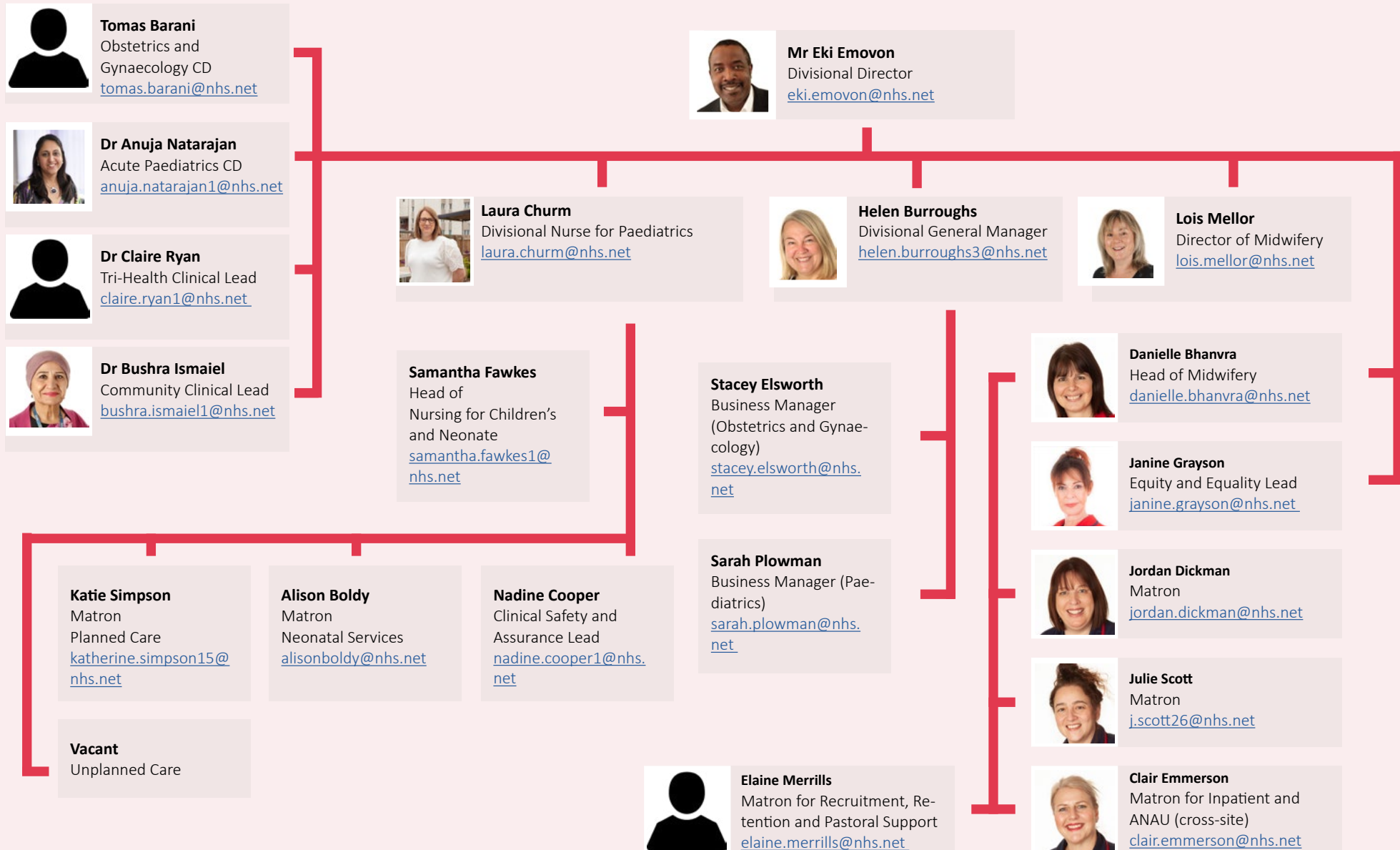
Joe Hall
Business Manager
joseph.hall2@nhs.net

Glen Scarrott
Matron for Critical Care
glen.scarrott@nhs.net

Michelle Corbett
Matron for Pain, Pre-op and day Surgery and Theatre governance lead
michelle.corbett3@nhs.net

Debbie Swift
Matron for Radiology
deborah.swift@nhs.net

Women and Children structure



Supporting services for Divisions

Medicine



Hannah Burbanks
Medicine Senior People Business Partner
hannah.burbanks@nhs.net



Carol Orr
Education Lead - General Medicine
carol.orr1@nhs.net



Sonia Clarke
Education Lead - Acute Medicine
sonia.clark2@nhs.net



Ben Assifuah
Finance Business Partner
ben.assifuah@nhs.net



Dr Helen Meynell
Clinical Governance Lead
helen.meynell@nhs.net



Dr Cristina Oncia
Clinical Governance Lead
cristina.ncia@nhs.net

For the full structure and services **click the icon.**



Surgery



Laura Fawcett
Senior People Business Partner
laura.fawcett7@nhs.net



Kay Housley
Education Lead
k.housley1@nhs.net



Matthew Fuller
Finance Business Partner
matthew.fuller@nhs.net



Mr Duncan Drury
Clinical Governance Lead
duncan.drury@nhs.net

For the full structure and services **click the icon.**



Clinical Specialty Services



Jayne Lang
Senior People Business Partner
jayne.lang@nhs.net



Natalie McCarthy
Education Lead
natalie.mccarthy10@nhs.net



Charlotte Jallow
Finance Business Partner
charlotte.jallow2@nhs.net



Emma Galloway
Interim Governance Lead
emma.galloway@nhs.net

For the full structure and services **click the icon.**



Women and Children



Adam Evans
Senior People Business Partner
adam.evans2@nhs.net



Lynn Crewe
Education Lead - Families
lynne.crewe@nhs.net



Janette Swinwood
Education Lead - Children
janette.swinwood@nhs.net



Hayley Alton
Finance Business Partner
hayley.alton@nhs.net

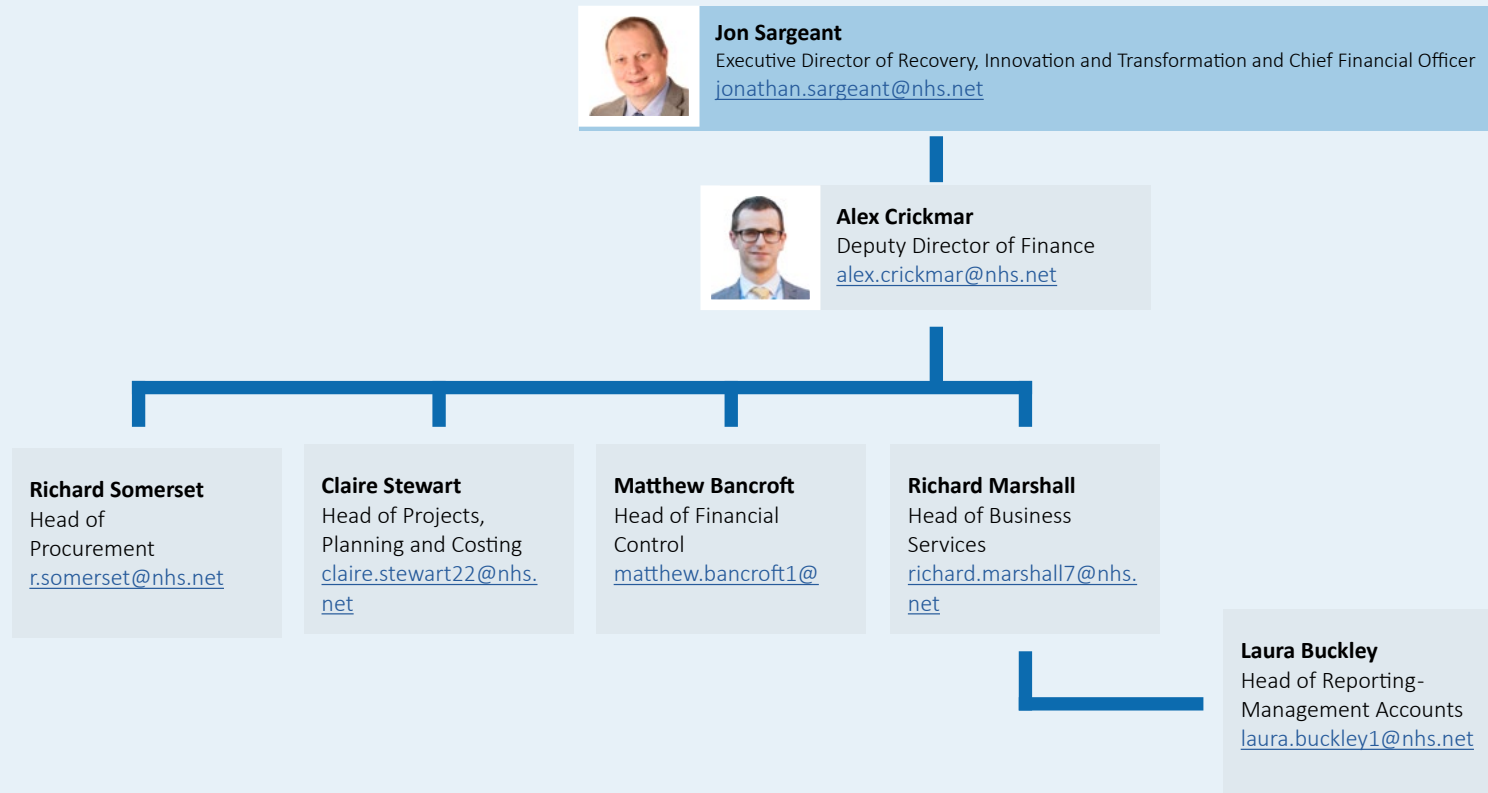


Denise Morgan
Clinical Governance Lead
denise.morgan2@nhs.net

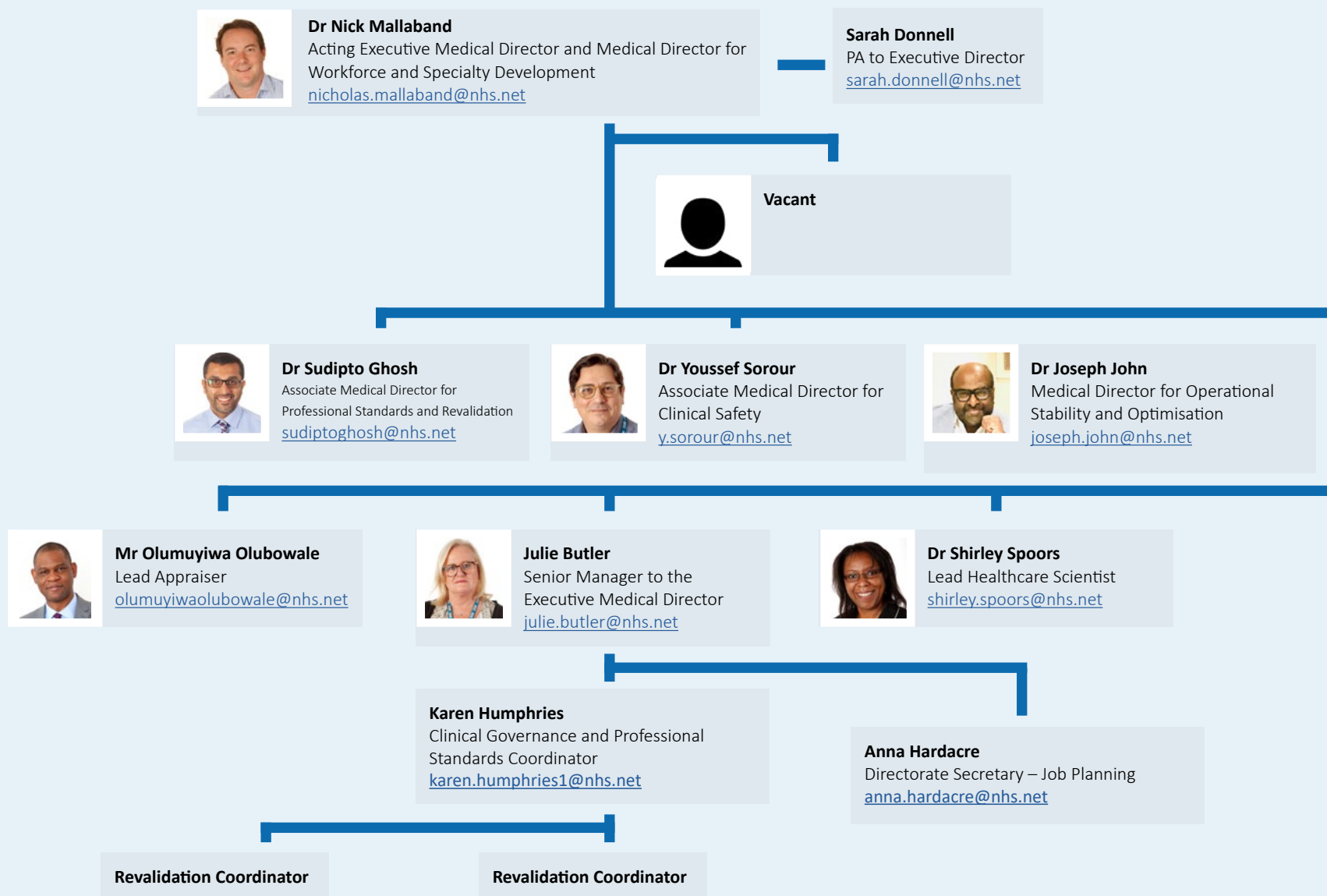
For the full structure and services **click the icon.**



Finance structure



Medical Director directorate structure

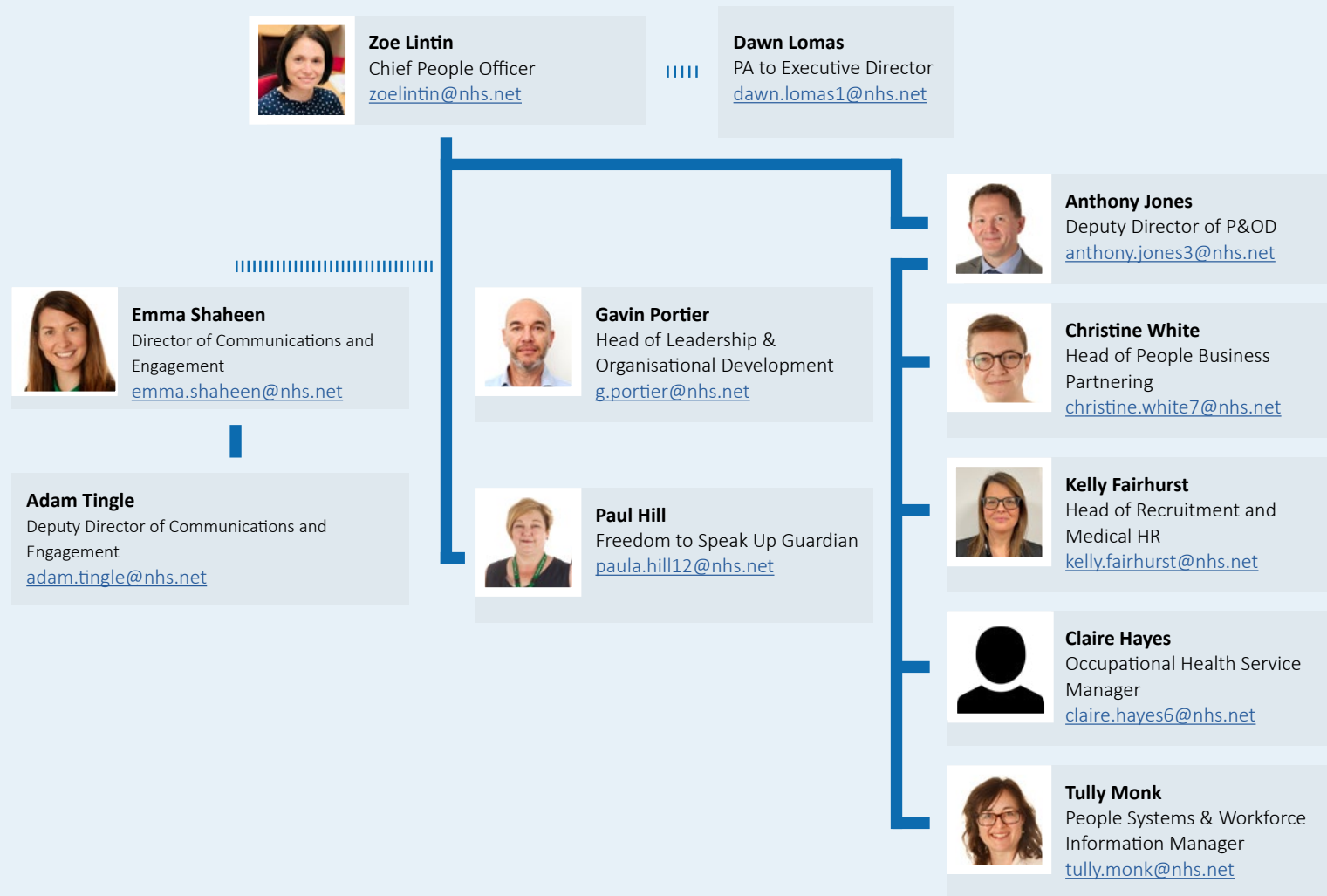


People and Organisational Development (P&OD)

P&OD services

Occupational Health. Health and Wellbeing. **Casework Team.** Recruitment. **Medical HR.** HR People and Business Partners. **ESR.** eRoster. **eExpenses.** P&OD Workforce Systems. **DBTH Workforce Information.** SBS Liason and Payroll. **Agency and Bank Workforce Solutions.** Widening Access. **Communications.** Graphics. **Medical Photography.**

P&OD structure

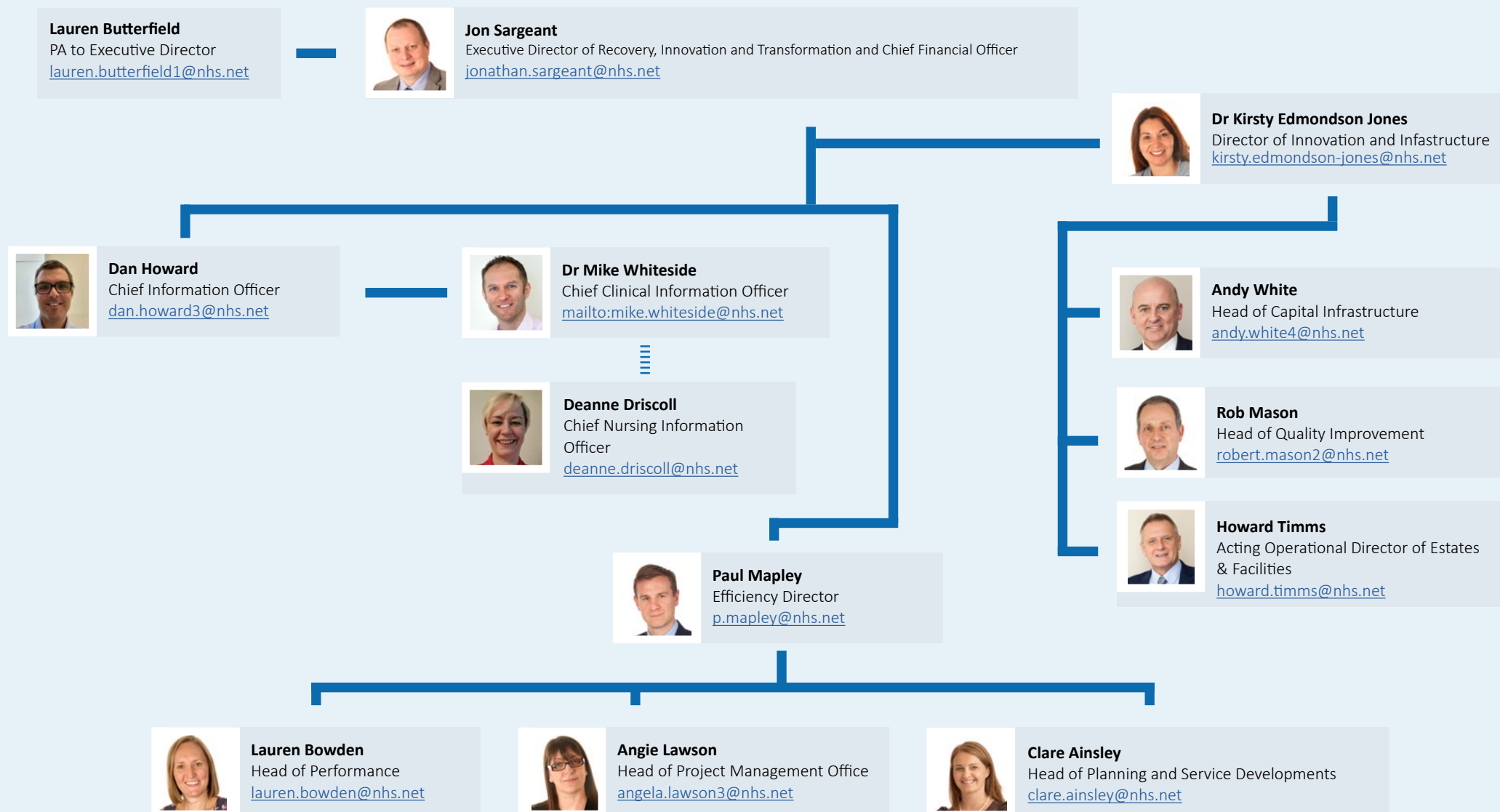


For the Executive
portfolio **click the icon.**

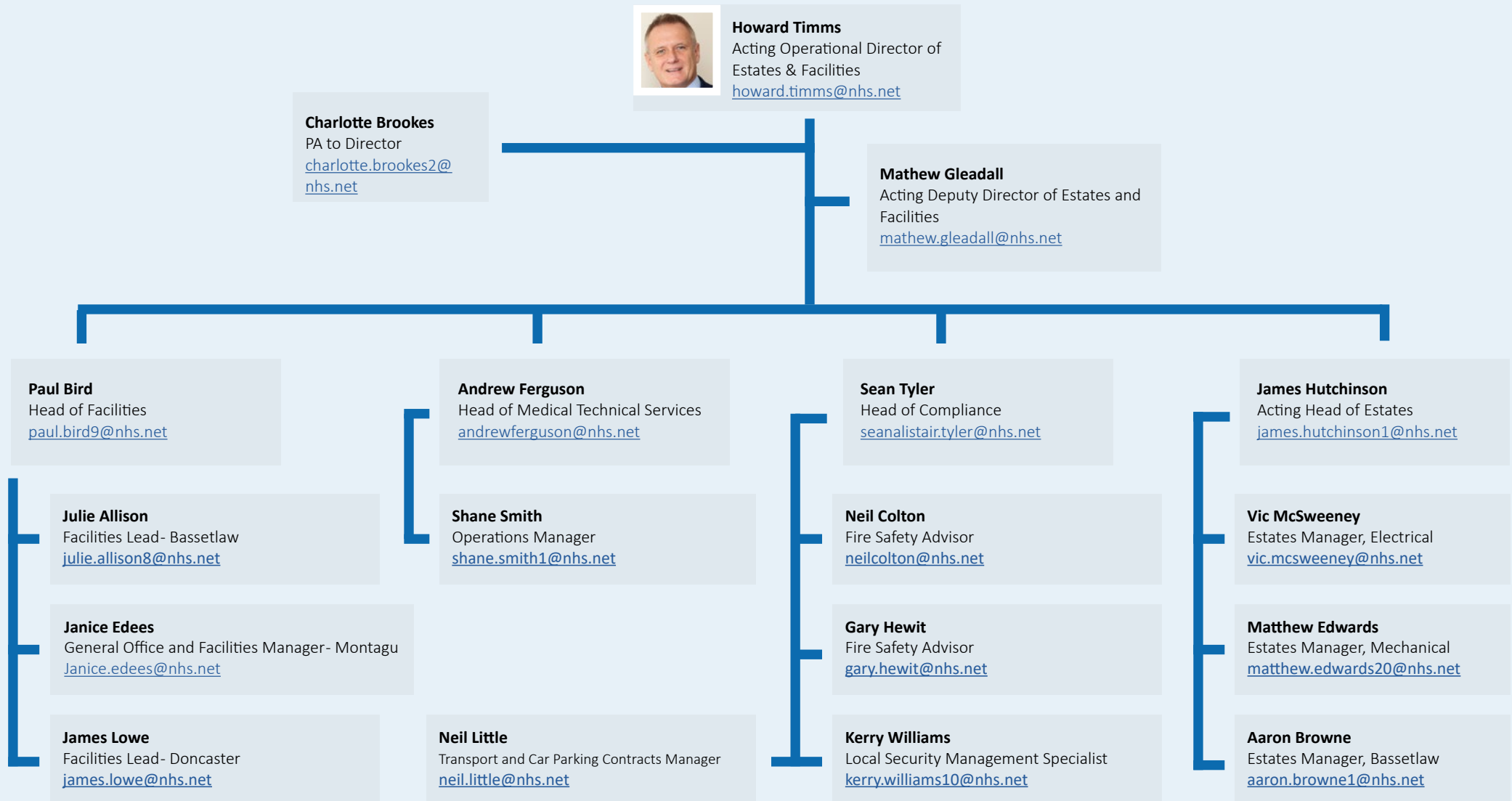


Recovery, Innovation and Transformation

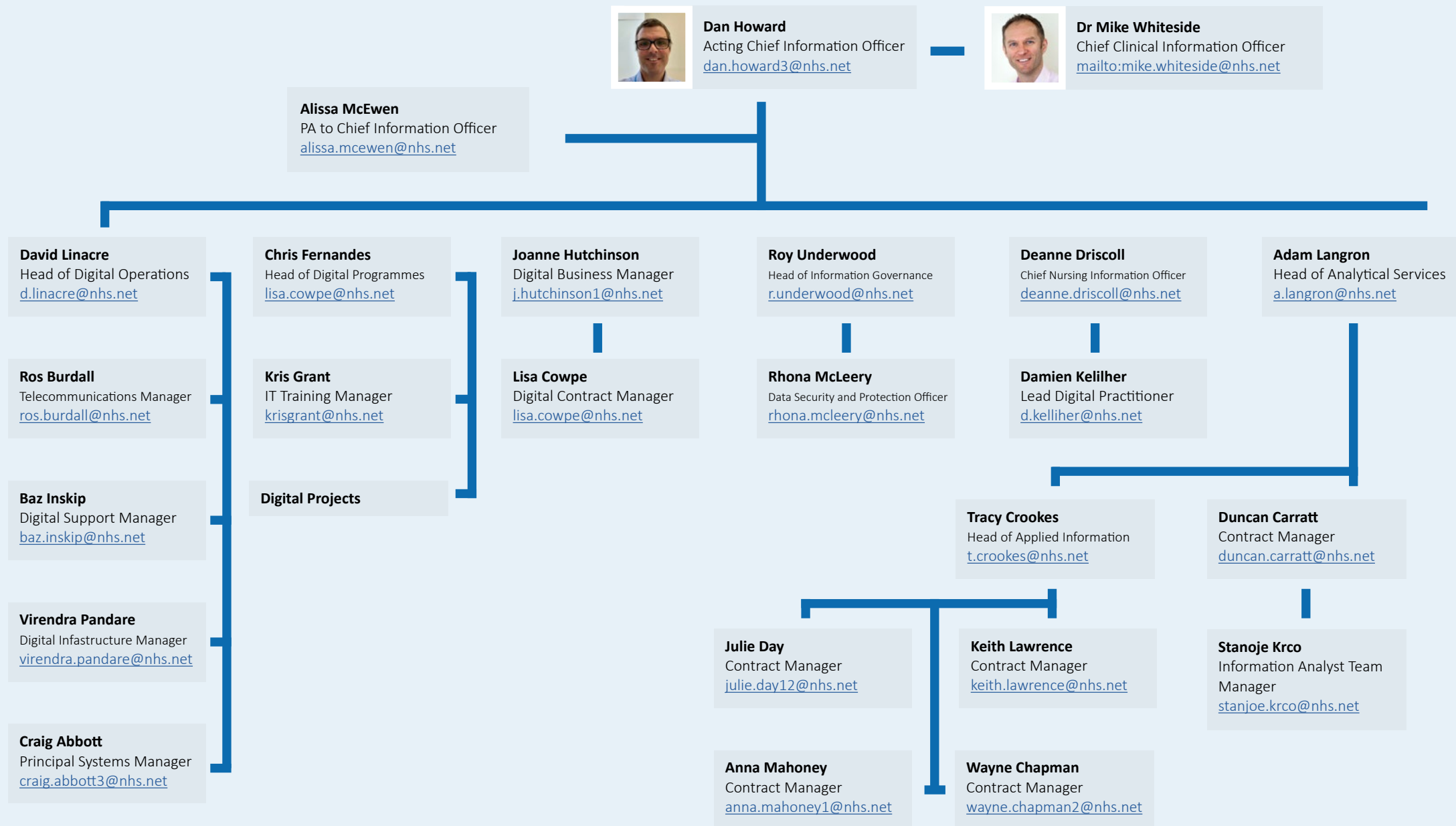
Recovery, Innovation and Transformation structure



E&F structure



Digital Transformation structure



Nursing, Midwifery and AHP leadership

Nursing, Midwifery and AHP structure



Karen Jessop
Chief Nurse
Karen.Jessop@nhs.net

Leanne Shaw
PA to Executive Director
leanne.shaw5@nhs.net



Dr Ken Agwuh
Director of Infection & Control
kenneth.agwuh@nhs.net



Lorna Ball
Divisional Nurse Medicine
lorna.ball@nhs.net



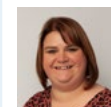
Laura Churm
Divisional Nurse Nursing for
Paediatrics
laura.churm@nhs.net



Elizabeth Dunwell
Divisional Nurse for Surgery
elizabethdunwell@nhs.net



Emma Galloway
Divisional Nurse for Clinical
Support Services
emma.galloway@nhs.net



Joanna Stedman
Division Nurse for UEC
joanna.stedman3@nhs.net



Lois Mellor
Director of Midwifery
lois.mellor@nhs.net



Simon Brown
Deputy Chief Nurse
Simon.Brown27@nhs.net



Professor Parveen Ali
Professor of Nursing
parveen.ali@sheffield.ac.uk



Heather Jackson
Director of Allied Health Professionals
heather.jackson@nhs.net

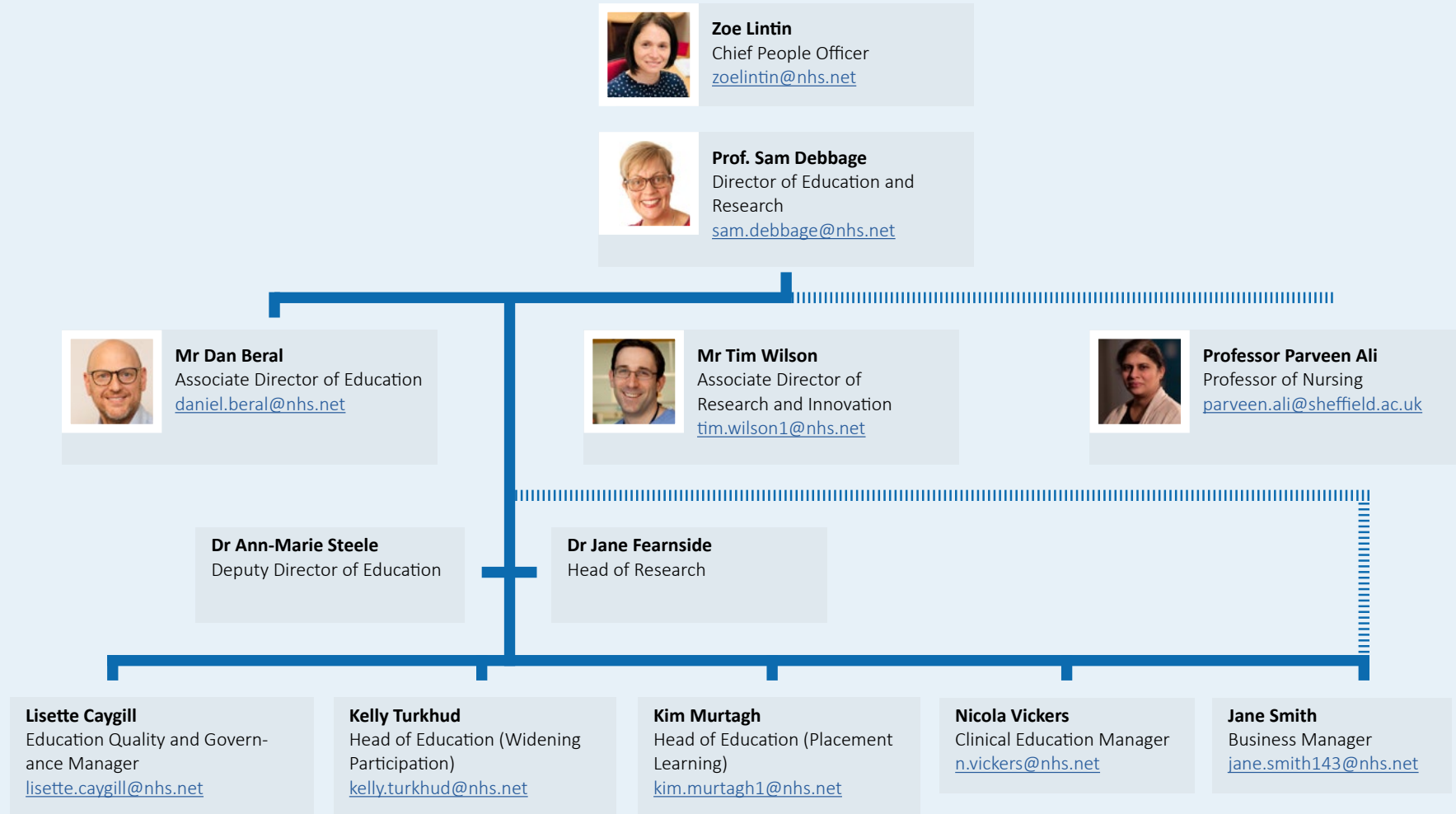


Kirsty Clarke
Associate Chief Nurse - Safe
Staffing
kirsty.clarke4@nhs.net



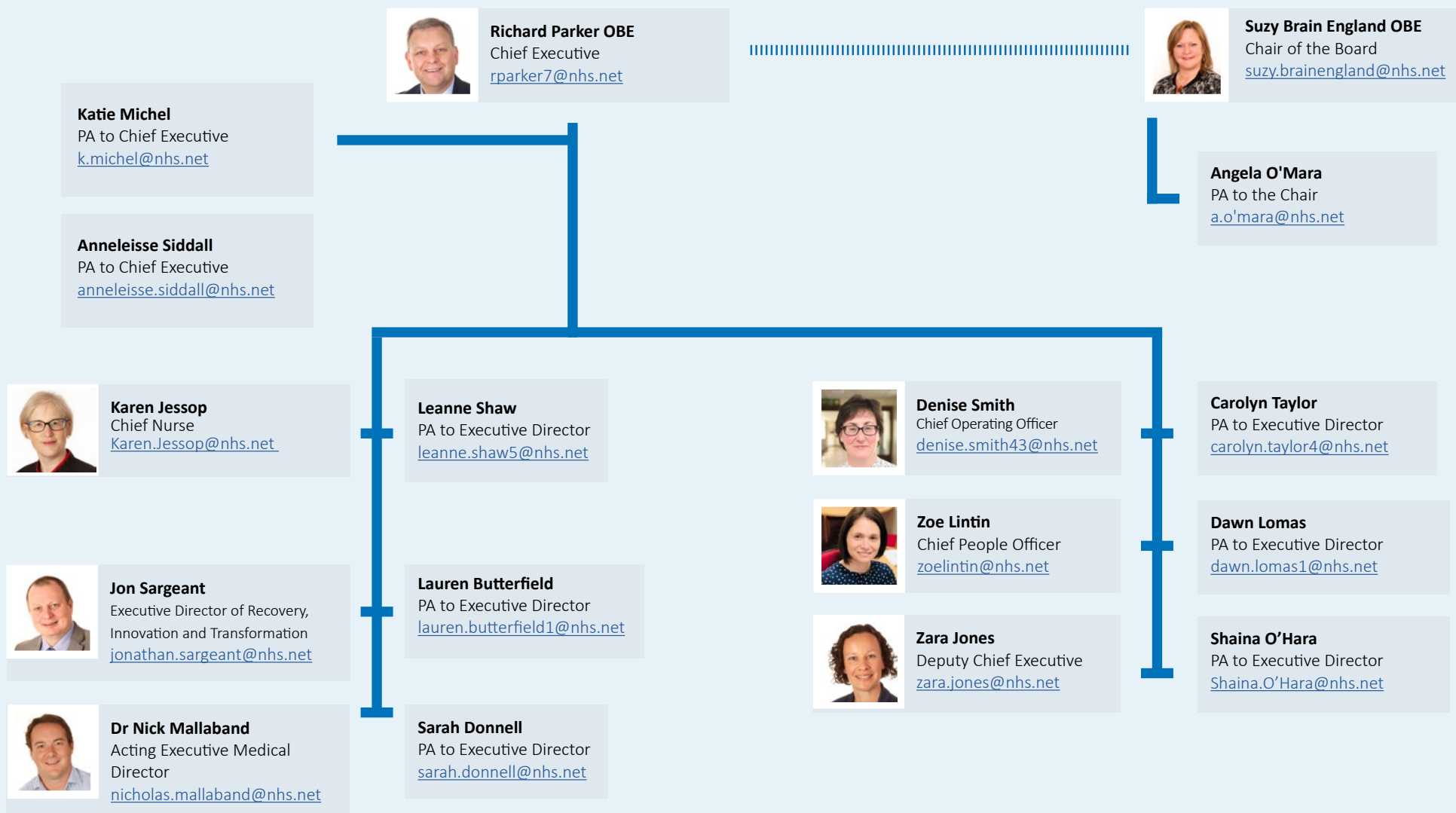
Marie Hardacre
Associate Chief Nurse for
Patient Safety and Quality
m.hardacre@nhs.net

Education and Research structure



Executive Directors

Executive Directors structure





Doncaster and Bassetlaw Teaching Hospitals NHS Foundation Trust

Document designed by the Trust's Communications Team © 2023