

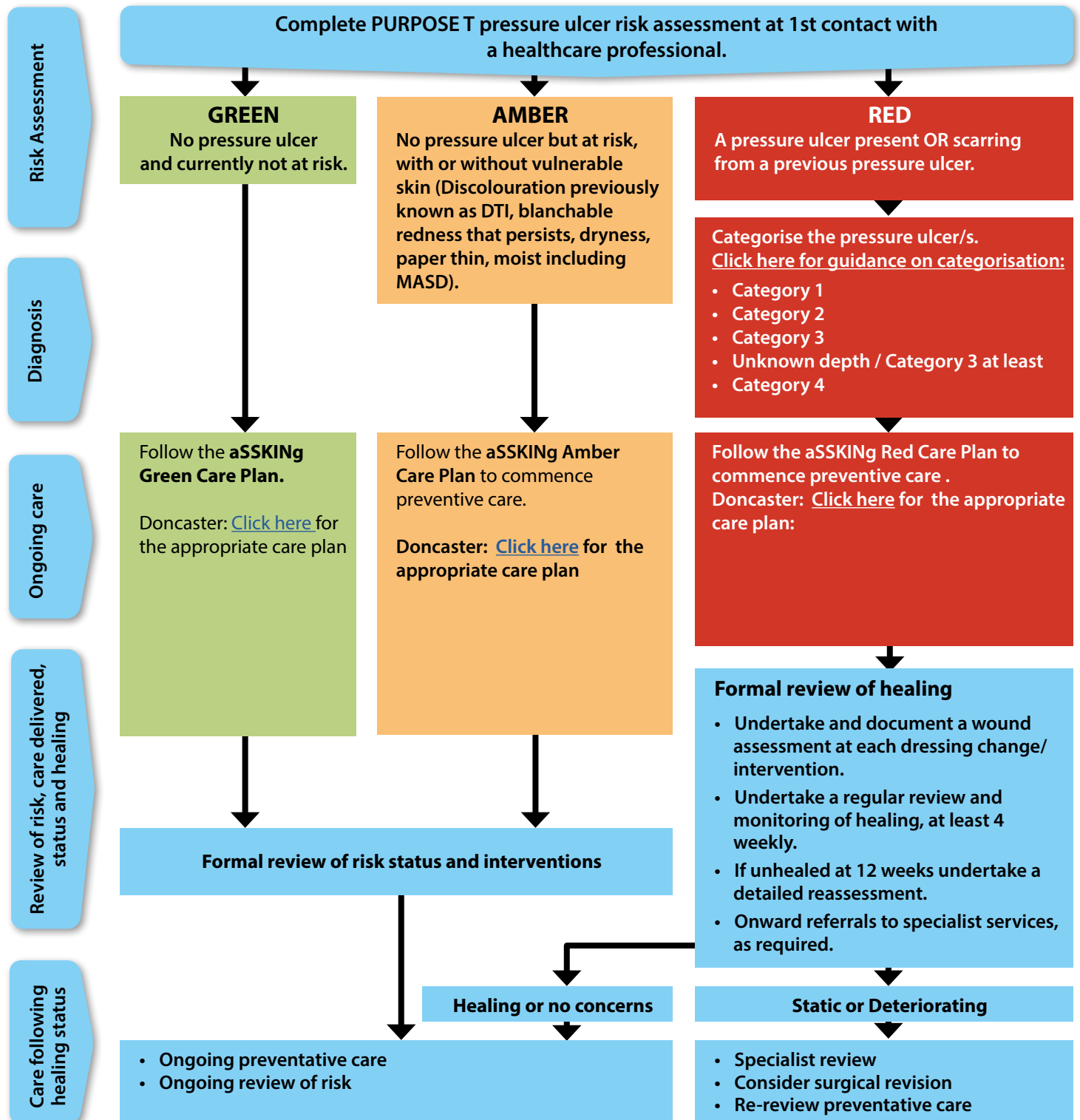
# Pressure Ulcer Clinical Pathway

In association with: **NHS**  
Sheffield Teaching Hospitals  
NHS Foundation Trust

**NHS**  
Doncaster and Bassetlaw  
Teaching Hospitals  
NHS Foundation Trust

A pressure ulcer is defined as localised damage to the skin and/or underlying tissue, as a result of pressure or pressure in combination with shear.

They usually occur over a bony prominence but may also be related to a medical device or other object (NICE 2023). Pressure ulcers are in the 'top ten harms' in the NHS in England (Fletcher 2022).



Developed from the National Wound Care Strategy Programme (NWSCP) Pressure Ulcer Recommendations and Clinical Pathway.  
Fletcher, J. National Wound Care Strategy update: Pressure ulcer prevention and the PSIRF exemplar. 2022, Vol. 18, 4.  
National Institute for Health and Care Excellence (NICE) 2023 pressure-ulcers.